



# Mean Field Models of Flux Transport Dynamo and Meridional Circulation in the Sun and Stars

Gopal Hazra<sup>1,2</sup> · Dibyendu Nandy<sup>3,4</sup> · Leonid Kitchatinov<sup>5</sup> · Arnab Rai Choudhuri<sup>6,7</sup>

Received: 14 February 2023 / Accepted: 22 June 2023  
© The Author(s) 2023

## Abstract

The most widely accepted model of the solar cycle is the flux transport dynamo model. This model evolved out of the traditional  $\alpha\Omega$  dynamo model which was first developed at a time when the existence of the Sun's meridional circulation was not known. In these models the toroidal magnetic field (which gives rise to sunspots) is generated by the stretching of the poloidal field by solar differential rotation. The primary source of the poloidal field in the flux transport models is attributed to the Babcock–Leighton mechanism, in contrast to the mean-field  $\alpha$ -effect used in earlier models. With the realization that the Sun has a meridional circulation, which is poleward at the surface and is expected to be equatorward at the bottom of the convection zone, its importance for transporting the magnetic fields in the dynamo process was recognized. Much of our understanding about the physics of both the meridional circulation and the flux transport dynamo has come from the mean field theory obtained by averaging the equations of MHD over turbulent fluctuations. The mean field theory of meridional circulation makes clear how it arises out of an interplay between the centrifugal and thermal wind terms. We provide a broad review of mean field theories for solar magnetic fields and flows, the flux transport dynamo modelling paradigm and highlight some of their applications to solar and stellar magnetic cycles. We also discuss how the dynamo-generated magnetic field acts on the meridional circulation of the Sun and how the fluctuations in the meridional circulation, in turn, affect the solar dynamo. We conclude with some remarks on how the synergy of mean field theories, flux transport dynamo models and direct numerical simulations can inspire the future of this field.

**Keywords** Sun: dynamo · Sun: meridional circulation · Sun: magnetic topology · Stars: late-type · Stars: magnetic field

## 1 Introduction

The turbulent convection zones of the Sun and other stars host a magnetohydrodynamic dynamo mechanism which involves interactions between the velocity and the magnetic fields. When this interaction takes place within a rotating astrophysical object, it leads to the possibility of a large-scale magnetic field emerging out of such interactions (Parker 1955a;

---

Solar and Stellar Dynamos: A New Era  
Edited by Manfred Schüssler, Robert H. Cameron, Paul Charbonneau, Mausumi Dikpati,  
Hideyuki Hotta and Leonid Kitchatinov

---

Extended author information available on the last page of the article

Steenbeck et al. 1966; Moffatt 1978; Parker 1979). Historically this subject developed by solving the mean field equations which arise by averaging over turbulence at small scales. The challenge of the subject comes from the fact that physics at small scales may profoundly influence what is happening at the large scales. The physics of small scales is captured in the mean field equations through a set of parameters – the  $\alpha$ -effect, turbulent diffusion, Reynolds stresses (including what is called the  $\Lambda$ -effect), and turbulent pumping. We shall collectively refer to them as ‘turbulence parameters’ (Moffatt 1978). The mean field theory has two aspects. (i) We have to estimate the turbulence parameters by some means. (ii) We have to solve the mean field equations in which these turbulence parameters appear. In the early years of research, turbulence parameters would be calculated analytically by making some suitable assumptions about the small-scale turbulence (e.g., Choudhuri 1998). Sometimes, observational data could be used to put important constraints on these parameters (e.g., Chae et al. 2008; Hazra and Miesch 2018). Within the last few years, it has been possible to calculate the turbulence parameters from numerical simulations of turbulence (e.g., Käpylä et al. 2006; Simard et al. 2016; Shimada et al. 2022; Warnecke et al. 2021). We expect more inputs from simulations in the coming years to put the mean field models on a firmer footing. There is a common consensus that the mean field models played a historically important role in the development of the subject. However, with increasingly complex and computationally intensive full magnetohydrodynamic (MHD) simulations being done by various groups around the world, are mean field models still relevant?

The mean field modelling approach is computationally less demanding and it is possible to make more extensive parameter space studies with them. However, there is a deeper reason why the mean field models continue to remain so relevant. Even the most ambitious numerical simulations undertaken at the present time have fluid and magnetic Reynolds numbers many orders of magnitude smaller than what they are for the Sun and other stars. They are still very far from producing sufficiently realistic results which can be compared with observational data in detail. On the other hand, by adjusting various parameters of mean field models suitably, it is often possible to achieve remarkable agreements with observations. This approach may justifiably be criticized as ad hoc. However, an understanding of what needs to be done in the mean field models to achieve convergence with observational data often provides great insights into various physical processes. Mean field models are expected to remain an active research area for many years to come.

The mean field theory of large-scale magnetic fields is easily adapted to an approach known as kinematic dynamo theory. In this approach, we have to specify the large-scale flows – such as the differential rotation and the meridional circulation – apart from the turbulence parameters, and then the evolution of the mean magnetic field is calculated – an approach pioneered by Parker (1955a) and Steenbeck et al. (1966). While the kinematic dynamo theory was developing, important developments also took place in the mean-field theory of large-scale flows – the initial impetus coming from efforts to explain the differential rotation of the Sun. For a few decades, the kinematic dynamo theory and the mean field theory of large-scale flows developed almost independently of each other. These two theories have come together in the last few years with the blossoming of the field of solar and stellar dynamos. Kinematic models of the solar dynamo could rely on the observations of the differential rotation and the meridional circulation of the Sun. We do not have similar detailed observational data of other stars. In order to build mean field models of stellar dynamos, the kinematic dynamo theory and the mean field theory of large-scale flows have to be combined together. In the case of the Sun also, as we have become aware of various feedback processes between the solar magnetic cycle and the large-scale flows, it has become essential to combine the two theories of the kinematic dynamo and large-scale flows –

to model such phenomena as torsional oscillations and variations of the meridional circulation.

The first models of the solar dynamo were constructed at a time when the only available knowledge about large-scale flows was the existence of differential rotation at the solar surface. Nothing was known about the meridional circulation of the Sun or the distribution of differential rotation underneath the solar surface. With the discovery of the meridional circulation and the realization that it is likely to play an important role in the dynamo process, a new type of dynamo model – the flux transport dynamo model – came into being. There are now efforts to apply the flux transport dynamo model to other stars. Since the meridional circulation plays a crucial role in the flux transport dynamo, the temporal variation of this circulation in the Sun may have a profound effect on the solar cycle. Some of the irregularities of the solar cycle may arise from fluctuations in the meridional circulation (Karak and Choudhuri 2011; Choudhuri and Karak 2012).

The solar dynamo has been the subject of several reviews (Choudhuri 2011; Charbonneau 2014; Karak et al. 2014a; Charbonneau 2020). The prospect for extrapolating the solar dynamo models to stars has been reviewed by Choudhuri (2017). We also refer to recent reviews of the meridional circulation (Choudhuri 2021b; Hanasoge 2022).

The mean field models of large-scale magnetic and velocity fields are described in the next section. Then Sect. 3 describes how large-scale flows in the Sun and stars – especially the meridional circulation – can be computed from the mean field model of large-scale flows. How the flux transport dynamo model arose for explaining the solar cycle will be discussed in the Sect. 4, with Sect. 5 summarizing its applications to other stars. Then Sect. 6 will point out the key role of meridional circulation variations in explaining the solar cycle irregularities. In the Sect. 7, we survey the current status of the important subject of computing the turbulent parameters from numerical simulations, which may provide important inputs to mean field models, and conclude our review.

## 2 Mean Field Theory of Large-Scale Magnetic and Velocity Fields

Magnetic and velocity fields of the Sun behave differently on large and small spatial scales. The fields of the scale comparable to the solar radius show repeatable – though not strictly periodic – evolution of their patterns in the course of 11-year solar cycles (Hathaway 2015). Cells of granular or supergranular solar convection, on the other hand, reconfigure themselves irregularly on a much shorter time scale. This leads to the basic idea of mean-field magnetohydrodynamics (MHD) that not detailed structures but mean statistical properties only of the small-scale turbulent magnetic ( $\mathbf{b}$ ) and velocity ( $\mathbf{v}$ ) fields are relevant to the dynamics of their large-scale magnetic ( $\mathbf{B}$ ) and velocity ( $\mathbf{V}$ ) counterparts. Different scales are separated by temporal or spatial averaging, which leaves the large-scale field unchanged but nullifies the turbulent fields:  $\langle \mathbf{b} \rangle = 0$ ,  $\langle \mathbf{v} \rangle = 0$ , where the angular brackets signify the averaging.

Formulation of the mean-field MHD is a formidable task that is not completed up to now. Nevertheless, the main effects and methods of the mean-field theory were systematised already about forty years ago in the monographs by Moffatt (1978), Parker (1979) and Krause and Rädler (1980). The mean field induction equation of the theory,

$$\frac{\partial \mathbf{B}}{\partial t} = \nabla \times (\mathcal{E} + \mathbf{V} \times \mathbf{B} - \eta \nabla \times \mathbf{B}), \quad (1)$$

includes the small-scale turbulent fields via the mean electromotive force (EMF)  $\mathcal{E} = \langle \mathbf{v} \times \mathbf{b} \rangle$ . In what follows, we use the following basic expression for the EMF

$$\mathcal{E} = \alpha \mathbf{B} + \mathbf{v}^{\text{dia}} \times \mathbf{B} - \eta_{\text{T}} \nabla \times \mathbf{B}, \quad (2)$$

which includes so-called  $\alpha$ -effect, diamagnetic pumping and eddy diffusion, respectively, in its right-hand side.

Among the three effects, diamagnetic pumping seems to be the least known one. The diamagnetic effect of turbulent conducting fluids consists in expulsion of magnetic fields from the regions of relatively high turbulent intensity (see Kitchatinov and Olemskoy 2012b, for pictorial explanation). The effect was predicted by Zeldovich (1957) and first derived by Rädler (1968) where the expression for the effective velocity

$$\mathbf{v}^{\text{dia}} = -\frac{1}{2} \nabla \eta_{\text{T}} \quad (3)$$

can be found (see also Eq. (3.10) in Kitchatinov and Rüdiger 1992). The diamagnetic pumping has been detected in MHD laboratory experiment (Spence et al. 2007) and in direct numerical simulations (Tobias et al. 1998; Dorch and Nordlund 2001; Ossendrijver et al. 2002). If included in a dynamo model, the downward diamagnetic pumping with the effective velocity of Eq. (3) can concentrate magnetic fields at the bottom of the convection zone thus realising an overshoot dynamo even in distributed-type models (Kitchatinov and Olemskoy 2012b).

The coefficient  $\alpha$  appearing in Eq. (2), which becomes a rank-2 tensor in the completely general situation, arises from helical turbulent motions and is crucial for the dynamo generation of the magnetic field. It was first evaluated by Parker (1955a) and Steenbeck et al. (1966). For isotropic turbulence, suitable assumptions lead to the expression

$$\alpha = -\tau \langle \mathbf{v} \cdot (\nabla \times \mathbf{v}) \rangle / 3, \quad (4)$$

where  $\tau$  is the correlation time of turbulence (Choudhuri 1998). As we shall point out in Sect. 4, the flux transport dynamo involves a different mechanism for magnetic field generation: the Babcock–Leighton mechanism. This mechanism also can be represented by the coefficient  $\alpha$  appearing in Eq. (2). However,  $\alpha$  corresponding to this mechanism is not given by Eq. (4).

It has been found relatively recently that the conservation of magnetic helicity leads to a catastrophic quenching of the  $\alpha$ -effect (Gruzinov and Diamond 1994; Brandenburg and Subramanian 2005), switching off the local  $\alpha$ -effect of Eq. (2) in the case of large magnetic Reynolds number. It can be shown that non-local  $\alpha$ -effect of Babcock–Leighton type is not subject to the catastrophic quenching when combined with downward diamagnetic pumping (Kitchatinov and Olemskoy 2011a; Brandenburg et al. 2015). The physical reason for alleviation of the catastrophic quenching in this case is spatial separation of the (near-bottom) toroidal field and the (near-surface) poloidal field generated from the toroidal field by non-local  $\alpha$ -effect. The large-scale magnetic helicity is not produced in this case and helicity conservation does not demand an emergence of equal amount of opposite in sign small-scale helicity which is an essential part of the catastrophic quenching mechanism (Brandenburg and Subramanian 2005).

We now turn to the mean field theory of large-scale flows. The mean-field equation of motion is

$$\frac{\partial \mathbf{V}}{\partial t} + (\mathbf{V} \cdot \nabla) \mathbf{V} = \frac{1}{\mu \rho} (\mathbf{B} \cdot \nabla) \mathbf{B} - \frac{1}{\rho} \nabla \left( P + \frac{B^2}{2\mu} \right) + \mathbf{g} + \frac{1}{\rho} \nabla \cdot \mathcal{S}, \quad (5)$$

where  $P$  is pressure,  $\mathbf{g}$  is gravity and

$$S_{ij} = -\rho \langle v_i v_j \rangle + \mu^{-1} \langle b_i b_j - \frac{1}{2} \delta_{ij} b^2 \rangle \tag{6}$$

is the turbulence stress tensor combining the Reynolds and Maxwell stress of small-scale fields.

Mean field MHD has to express the turbulent stress in terms of large-scale fields. Galilean invariance demands the mean velocity to contribute via its spatial derivatives only:

$$S_{ij} = \rho N_{ijkl} \nabla_k V_l \tag{7}$$

(repetition of subscripts means summation). This linear relation can be seen as a formal definition of the eddy viscosity tensor  $N_{ijkl}$ . Enhanced dissipation of large-scale flows is a well-known effect of turbulence. This is however not all what convective turbulence in stars can do. Convection is driven by buoyancy forces which point upward or downward in radius. This imparts *anisotropy* with different intensities of radial and horizontal turbulent mixing. It is known since Lebedinsky (1941) that the eddy viscosity tensor for anisotropic turbulence does not satisfy the Onsager symmetry rule  $N_{ijkl} = N_{klij}$ . The rule has to be satisfied for true viscosity decreasing kinetic energy of mean flow (see Sect. I.9 in Lifshitz and Pitaevskii 1981). Violation of the rule signals that the anisotropic turbulence does not necessarily dissipate but can excite some kind of large-scale flow. An important application of this excitation effect was found in the theory of stellar differential rotation where it is known as the  $\Lambda$ -effect (Rüdiger 1989). The stress tensor of Eq. (7) for anisotropic turbulence does not vanish for rigid rotation,

$$S_{ij}^\Lambda = \rho N_{ijkl} \varepsilon_{klm} \Omega_m, \tag{8}$$

where  $\Omega$  is the angular velocity and  $\varepsilon_{klm}$  is the fully antisymmetric tensor. The components  $S_{r\phi}^\Lambda$  and  $S_{\theta\phi}^\Lambda$  in spherical coordinates stand for the angular momentum fluxes by turbulence, which are the principal drivers of stellar differential rotation. Details of the  $\Lambda$ -effect theory can be found in Rüdiger (1989) and Rüdiger et al. (2013). Separation of the  $\Lambda$ -effect from true viscosity changes Eq. (7) to

$$S_{ij} = S_{ij}^\Lambda + \rho \mathcal{N}_{ijkl} \nabla_k V_l, \tag{9}$$

where  $\mathcal{N}_{ijkl}$  is the true viscosity tensor with positive definite coefficients and symmetry,  $\mathcal{N}_{ijkl} = \mathcal{N}_{klij}$ , ensuring dissipation of large-scale flows. Derivation of the viscosity tensor for rotating turbulence can be found in Kitchatinov et al. (1994).

It may be noted that several effects in excess of the  $\Lambda$ -effect and eddy viscosity of Eq. (9) have been found in the extensive literature on turbulent stress. These include turbulent pressure, a slight modification of the large-scale Lorentz force (Kleeorin and Rogachevskii 1994; Rüdiger et al. 2012), and the anisotropic kinetic alpha-effect (Frisch et al. 1987). Equation (9) includes what matters for stellar applications only. A similar comment applies to the EMF of Eq. (2). The equation displays its three basic contributions in the simplest form. Rotationally induced anisotropy complicates them (Pipin 2008; Kitchatinov et al. 1994) so that, e.g., the eddy magnetic diffusivities for the directions along and across the rotation axis differ. The rotational anisotropy however is of modifying rather than principal nature for stellar dynamo modelling.

### 3 Meridional Circulation in the Sun and Stars

The global flow in the sun is known to vary little in course of the activity cycle. The flow is not magnetic by origin. We consider first hydrodynamics of the meridional flow and discuss its magnetic modification afterwards.

#### 3.1 Meridional Flow Origin and Structure

Momentum density in the stellar convection zones is divergence-free,  $\nabla \cdot (\rho \mathbf{u}) = 0$ , to a good approximation (Lantz and Fan 1999). In this case, the meridional flow is a fluid circulation over closed stream-lines.

The circulation proceeds in a turbulent convection zone where the eddy viscosity resists the flow. Some forces supporting the flow against the viscous decay should therefore be present. Only non-conservative forces can transmit energy to a circulatory flow. Motion equation (5) can be curled to filter-out irrelevant conservative forces: see, for example, Choudhuri (2021b). This leads to a meridional flow description in terms of the azimuthal vorticity  $\omega = (\nabla \times \mathbf{V})_\phi$ :

$$\frac{\partial \omega}{\partial t} + r \sin \theta \nabla \cdot \left( \mathbf{V} \frac{\omega}{r \sin \theta} \right) + \mathcal{D}(\omega) = r \sin \theta \frac{\partial \Omega^2}{\partial z} - \frac{g}{r c_p} \frac{\partial S}{\partial \theta}. \quad (10)$$

In this equation,  $z = r \cos \theta$  is the (signed) distance from the equatorial plane,  $S$  is the specific entropy, and  $\mathcal{D}$  accounts for the viscous dissipation of the meridional flow. The symbolic representation for the dissipation term is justified by complexity of its explicit formulation (Kitchatinov and Olemskoy 2011b). The dissipation term acts to decrease the meridional flow energy.

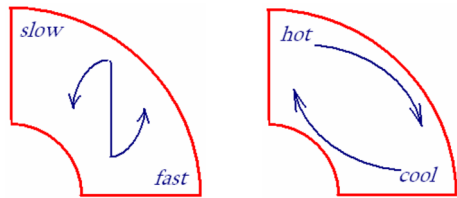
Two terms in the right-hand side of Eq. (10) stand for two principal drivers of the meridional flow. The first term includes driving by the centrifugal force. The force is conservative for cylinder-shaped ( $z$ -independent) rotation. Accordingly, the first term in the right-hand side of (10) accounts for the non-conservative part of the centrifugal force. The second term involves the non-conservative buoyancy (baroclinic) force.

Figure 1 illustrates the two drivers. If the angular velocity decreases with distance from the equatorial plane, as it does in the sun (Schou et al. 1998), a torque by the centrifugal force tends to drive anti-clockwise circulation (in the north-west quadrant of the convection zone). The baroclinic driving is proportional to the temperature variation with latitude inside the convection zone. The ‘differential temperature’ results from rotationally-induced anisotropy of the convective heat transport (Rüdiger et al. 2005). If the temperature increases with latitude, as it probably does in the Sun (Miesch et al. 2006; Kitchatinov and Olemskoy 2011b), a slightly cooler fluid at low latitudes tends to sink down and the warmer polar fluid tends to rise up and spread over the surface to drive a clockwise circulation (Fig. 1).

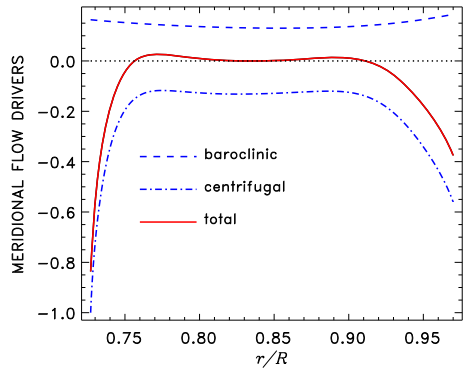
The two drivers of the meridional flow counteract each other in the sun. The counteraction probably is the general case with solar-type stars. This can be evidenced by normalizing Eq. (10) to dimensionless units. Measuring time in its viscous scale  $R^2/\nu_T$  and multiplying Eq. (10) by this scale squared, gives the first and the second terms in the right-hand side of the normalised equation the coefficients of the Taylor (Ta) and Grashof (Gr) numbers

$$\text{Ta} = \frac{4\Omega^2 R^4}{\nu_T^2}, \quad \text{Gr} = \frac{g R^3 \delta T}{\nu_T^2 T} \quad (11)$$

**Fig. 1** Illustration of the centrifugal (left) and baroclinic (right) driving of the meridional flow (see text)



**Fig. 2** Depth profiles of the baroclinic and centrifugal driving terms of the meridional flow equation (10) for the 45° latitude computed with the mean-field model by Kitchatinov and Olemskoy (2011b). The driving terms are normalised to the maximum absolute value one and their sum is shown by the red line



respectively, where  $\delta T$  is the differential temperature. Direct numerical simulations (Miesch et al. 2006) and mean-field models (Kitchatinov and Olemskoy 2011b) of the solar differential rotation give the value  $\delta T/T \sim 10^{-5}$  for the normalised differential temperature varying moderately with depth. This leads to large characteristic values of  $Gr \sim Ta \sim 10^7$  for the standard mixing-length estimation  $\nu_T \approx 5 \times 10^8 \text{ m}^2 \text{ s}^{-1}$  of the eddy viscosity. Each term in the left side of Eq. (10) scales to a much smaller value. There is no other way to satisfy this equation but the two terms on its right-hand side almost balance each other. This leads to the balance equation

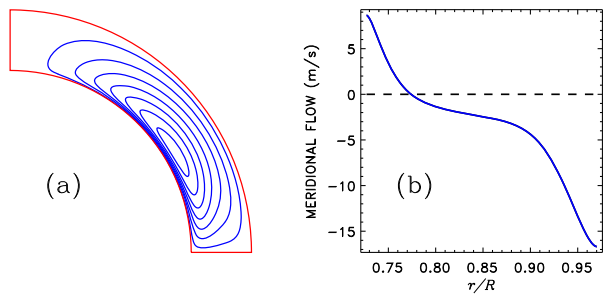
$$r \sin \theta \frac{\partial \Omega^2}{\partial z} - \frac{g}{r c_p} \frac{\partial S}{\partial \theta} = 0. \tag{12}$$

Equation (10) shows that the meridional flow results from a slight deviation from the thermo-rotational balance of Eq. (12). The vorticity equation also informs on how the balance is maintained. Every term in the right-hand side of this equation alone can drive a meridional flow of order one kilometer per second (Durney 1996). A considerable deviation from the balance would drive a fast meridional flow, which reacts back on the differential rotation and temperature to restore the balance. The meridional flow results from deviations from the thermo-rotational balance and also controls that the deviations are small. This consideration shows that a reasonable model for the meridional flow alone is not possible. A realistic model has to solve consistently for the meridional flow, differential rotation and heat transport.

Figure 2 shows the depth profiles of the meridional flow drivers computed with a mean-field model. The sum of the baroclinic and centrifugal drivers is close to zero in the bulk of the convection zone, which is therefore close to the thermo-rotational balance of Eq. (12). The balance is however violated near the top and bottom boundaries. This is because of the stress-free boundary conditions employed in the model. This condition of zero surface den-



**Fig. 3** Meridional flow stream-lines (a) and depth profile of the meridional velocity for the  $45^\circ$  latitude (b) from the same mean-field model as Fig. 2



sity of external forces ensures that the meridional flow is controlled by ‘internal’ processes inside the convection zone, not imposed externally.

The stress-free condition uniquely defines rotational gradient near the boundaries (Kitchatinov 2016) regardless of the balance condition of Eq. (12). As a result, deviation from cylinder-shaped rotation increases near the boundaries. This is probably why the centrifugal driving in Fig. 2 amplifies near the boundaries. On the contrary, the spherically symmetric heat flux at the bottom and free radiation on the top, prescribed in the model of Fig. 2, do not control the latitudinal entropy gradient and the near-surface baroclinic driving is not disturbed.

The stress-free condition together with zero radial velocity constitute a complete set of hydrodynamical boundary conditions. The extra condition of the thermo-rotational balance cannot be satisfied near the boundary. Thin boundary layers form where the balance is violated. Deviation from the balance excites the meridional flow inside the boundary layers.

The flow of Fig. 3 computed with the same mean-field model as Fig. 2 attains its largest velocity on the boundaries and decreases inside the convection zone. The flow of this Figure is in at least qualitative agreement with the recent seismological detection (Rajaguru and Antia 2015; Gizon et al. 2020; Hanasoge 2022). The surface flow velocity of Fig. 3 is close to solar observations. The flow profile and its bottom value are less certain. The turning point at about  $r/R = 0.77$  and the bottom velocity of 8 to  $9 \text{ m s}^{-1}$  are close to Fig. 4 by Rajaguru and Antia (2015) but differ somewhat from  $r/R \approx 0.8$  and bottom velocity of about  $5 \text{ m s}^{-1}$  found by Gizon et al. (2020). It may be noted that the computed bottom flow slows down and the turning point shifts to larger  $r$  if the model of Fig. 3 is modified by reducing mixing-length scale near the bottom (cf. Fig. 2 in Kitchatinov and Nepomnyashchikh 2017).

An unsettled issue is how deep the equatorward meridional counter flow penetrates within the solar interior. Based on a kinematic dynamo modelling approach Nandy and Choudhuri (2002) argued that a single cell flow penetrating below the convection zone into the stable, overshoot layer is important for explaining the low-mid latitude appearance of sunspots. While subsequent arguments have been made both against and for such a possibility (Gilman and Miesch 2004; Garaud and Brummell 2008), we note that the most recent observations do not rule out a deep meridional counter flow (Gizon et al. 2020).

Since the convection cells become much smaller at the top of the solar convection zone where the various scale heights are much smaller compared to the interior, the nature of convection clearly changes in a top layer and this complicates the issue of a boundary layer there. Observationally, helioseismic maps of differential rotation show a near-surface shear layer at the top of the solar convection zone. Recently Choudhuri (2021a) and Jha and Choudhuri (2021) have argued that this shear layer arises from the changed nature of convection rather than from a violation of Eq. (12).



The boundary layers in the solar model are not very thin (Fig. 2). Their thickness  $D_E \sim \sqrt{\nu_T/\Omega}$  decreases with rotation rate. For faster rotation, the meridional flow retreats to increasingly thin boundary layers and weakens inside the convection zone (Kitchatinov and Olemskoy 2012a). Simultaneously, the differential rotation changes from the conical shape to cylinder-shaped pattern reflecting a faster increase of the Taylor number of Eq. (11) with rotation rate compared to the Grashof number.

### 3.2 Magnetic Modifications

The meridional flow equation (Eq. (10)) is modified with allowance for the large-scale axisymmetric magnetic field  $\mathbf{B}$ :

$$\begin{aligned} \frac{\partial \omega}{\partial t} + r \sin \theta \nabla \cdot \left( \frac{\mathbf{V} \omega - \mathbf{V}_A \omega_A}{r \sin \theta} \right) + \mathcal{D}(\omega) \\ = r \sin \theta \frac{\partial(\Omega^2 - \Omega_A^2)}{\partial z} - \frac{g}{rc_p} \frac{\partial S}{\partial \theta} - \frac{g\rho}{2r\gamma P} \frac{\partial V_A^2}{\partial \theta}, \end{aligned} \tag{13}$$

where meridional flow driving terms are again collected in the right-hand side of the equation. The magnetic terms in Eq. (13) are formulated in terms of the Alfvén velocity  $\mathbf{V}_A = \mathbf{B}/\sqrt{\mu\rho}$  and the Alfvén angular frequency  $\Omega_A$  for the toroidal field  $B_\phi = \sqrt{\mu\rho} r \sin \theta \Omega_A$ ;  $\omega_A = (\nabla \times \mathbf{V}_A)_\phi$  is the magnetic vorticity and  $\gamma = c_p/c_v$  is the adiabaticity index.

The first term on the right-hand side of Eq. (13) includes the non-conservative magnetic tension by the toroidal field. The minus sign in the contribution means that the tension force points towards the rotation axis, opposite to the centrifugal force. The last term on the right-hand side stands for the baroclinic driving by magnetic pressure. It was accounted for when deriving this term that the density varies much stronger in radius than in latitude and the convection zone stratification is close to adiabaticity.

It can be seen that magnetic contribution in the left-hand side of Eq. (13) includes the poloidal field only. This field is weak and this contribution is negligible for the sun. For stars with deep convection zones, the poloidal field can be strong (Gregory et al. 2012) and the magnetic advection of vorticity can be significant.

Assuming that the mean field in the deep convection zone of the sun is of order 1 Tesla, we could see that the magnetic terms in Eq. (13) are about two orders of magnitude smaller compared to the centrifugal driving. The magnetic terms are nevertheless large compared to each term on the left side of the equation. As in the hydrodynamical case, the meridional flow results from a disbalance of the driving terms in the right-hand side of Eq. (13) but the flow reacts back to ensure that the deviation from the balance remains small.

The magnetically modified thermo-rotational balance is global by nature. This in particular means that rotation law variation in torsional oscillations may not spatially coincide with the location of the magnetic fields producing the oscillations (Pipin and Kosovichev 2020).

The magnetic field can also affect the meridional flow indirectly by modifying the differential temperature (Spruit 2003; Hanasoge 2022) or differential rotation.

## 4 Modelling the Solar Cycle: The Paradigm Shift from the $\alpha\Omega$ Dynamo to the Flux Transport Dynamo

In the mean-field model, the magnetic field is assumed to be axisymmetric and can be written as

$$\mathbf{B} = B_\phi(r, \theta, t) \mathbf{e}_\phi + \nabla \times [A(r, \theta, t) \mathbf{e}_\phi], \tag{14}$$

where  $B_\phi(r, \theta) \mathbf{e}_\phi$  is referred to as the toroidal field and  $\nabla \times [A(r, \theta) \mathbf{e}_\phi] = \mathbf{B}_p$  gives the poloidal field. The velocity field associated with large-scale flows can be written as

$$\mathbf{V} = \mathbf{V}_m + r \sin \theta \Omega(r, \theta) \mathbf{e}_\phi, \tag{15}$$

where  $\Omega(r, \theta)$  is the angular velocity in the interior of the Sun and  $\mathbf{V}_m$  is the meridional circulation having components  $V_r$  and  $V_\theta$ . On substituting Eq. (14) and Eq. (15) into Eq. (1) with  $\mathcal{E}$  given by Eq. (2), some reasonable assumptions lead to the following coupled equations for the poloidal and the toroidal fields

$$\frac{\partial A}{\partial t} + \frac{1}{s} (\mathbf{V}_m \cdot \nabla) (sA) = \eta_T \left( \nabla^2 - \frac{1}{s^2} \right) A + \alpha B, \tag{16}$$

$$\frac{\partial B}{\partial t} + \frac{1}{r} \left[ \frac{\partial}{\partial r} (r V_r B) + \frac{\partial}{\partial \theta} (V_\theta B) \right] = \eta_T \left( \nabla^2 - \frac{1}{s^2} \right) B + s (\mathbf{B}_p \cdot \nabla) \Omega + \frac{1}{r} \frac{d\eta_T}{dr} \frac{\partial}{\partial r} (rB), \tag{17}$$

where  $s = r \sin \theta$ . Note that we are not including the diamagnetic pumping term in this discussion.

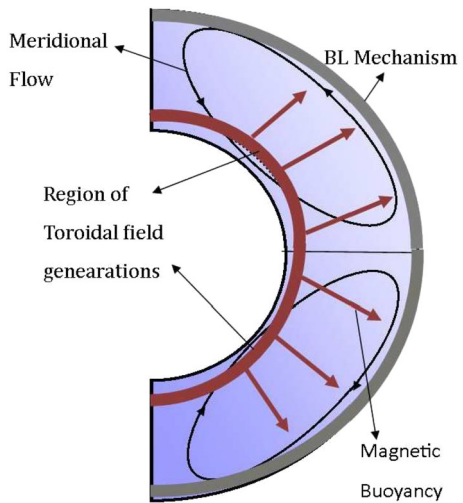
When the first efforts were made to construct mean field models of the solar dynamo (Parker 1955a; Steenbeck et al. 1966), the existence of the meridional circulation was not yet known. The early models which took  $\mathbf{V}_m = 0$  are now known as  $\alpha\Omega$  dynamo models. In such models, the generation of the poloidal field involves the  $\alpha$ -effect according to Eq. (16) and the generation of the toroidal field is due to differential rotation involving  $\Omega$  according to Eq. (17). A remarkable result was that the  $\alpha\Omega$  dynamo models could give periodic dynamo waves under certain circumstances (Parker 1955a; Steenbeck and Krause 1969). This raised the possibility of explaining the solar cycle with this model. In order to model the butterfly diagram of sunspots, we need to have the dynamo wave propagate in the equatorial direction. The condition for this was found to be

$$\alpha \frac{\partial \Omega}{\partial r} < 0 \tag{18}$$

in the northern hemisphere of the Sun. This is often referred to as the Parker–Yoshimura sign rule (Parker 1955a; Yoshimura 1975). In the 1970s when nothing was known about the nature of the differential rotation underneath the solar surface, many models of the solar dynamo were constructed by prescribing  $\alpha$  and  $\Omega$  in such a manner that the Eq. (18) was satisfied. Many of these models matched different aspects of the observational data of solar cycles reasonably well and it seemed that the subject was progressing in the right direction.

Several difficulties with the  $\alpha\Omega$  dynamo models started becoming apparent by the late 1980s. Firstly, as helioseismology started producing the first maps of the angular velocity distribution inside the Sun, it was found to be completely different from what was being assumed in various  $\alpha\Omega$  dynamo models: see, for example, Sect. 4 of Roberts (1972) and Sect. II of Stix (1976) for discussions of the types of differential rotation which they used. Secondly, it was established that the poloidal field of the Sun at the surface propagates poleward with the progress of the solar cycle, in contrast to the sunspots (forming from the toroidal field) which appear closer to the equator as the cycle progresses (Wang et al. 1989). In the simplest kinds of  $\alpha\Omega$  dynamo models without meridional circulation, the poloidal and toroidal fields remain coupled to each other, and it is not possible to make them move in opposite directions. Thirdly and lastly, simulations of sunspot formation indicated that the toroidal field must be much stronger than what used to be assumed. Bipolar sunspots form

**Fig. 4** A cartoon indicating the essential ingredients of the flux transport dynamo model. Taken from the PhD thesis (Hazra 2018)



when parts of the toroidal field rise through the convection zone due to magnetic buoyancy (Parker 1955b). Detailed simulations of this process based on the thin flux tube equation (Spruit 1981; Choudhuri 1990) showed that the Coriolis force due to the solar rotation tries to divert the rising flux tubes towards high latitudes (Choudhuri and Gilman 1987; Choudhuri 1989). Only if the magnetic field inside the flux tubes is sufficiently strong, it is able to counter the Coriolis force in such a manner that there is a match with the observational data (D’Silva and Choudhuri 1993; Fan et al. 1993; Caligari et al. 1995).

The flux transport dynamo model arose in response to these difficulties with the  $\alpha\Omega$  dynamo models. Bipolar sunspot pairs on the solar surface appear with a tilt (Hale et al. 1919) – due to the action of the Coriolis force (D’Silva and Choudhuri 1993). Babcock (1961) and Leighton (1969) realized that the decay of such tilted bipolar sunspot pairs would give rise to a poloidal field. The flux transport dynamo model invokes this Babcock–Leighton mechanism for the generation of the poloidal field. Unlike the canonical  $\alpha$ -effect, this mechanism does not require the toroidal field to be sufficiently weak. However, when the Babcock–Leighton mechanism is combined with the differential rotation given by helioseismology in a minimalistic dynamo model, the Parker–Yoshimura condition given by Eq. (18) is not satisfied at the low latitudes and dynamo waves are found to propagate in the poleward direction implying that sunspots would appear at higher latitudes with the progress of the solar cycle (Choudhuri et al. 1995), in contradiction with observations. We certainly need something else to turn things around. The meridional circulation was the first proposition which provides a way out of this conundrum.

Figure 4 is a cartoon summarizing how the flux transport dynamo model works. The dark red region at the bottom of the convection zone is where helioseismology has discovered a strong layer of differential rotation which overlaps with the stable overshoot layer beneath the convection zone. Dynamo models which incorporate direct helioseismic observations indicate that the toroidal field begins to be inducted in the convection zone (Muñoz-Jaramillo et al. 2009) and is subsequently amplified, stored and transported equatorward in the tachocline region (Nandy and Choudhuri 2002). However, see Spruit (2012) for various arguments against toroidal flux generation and storage in the tachocline region. Also, as pointed out by Muñoz-Jaramillo et al. (2009) that toroidal field generation is possible in the bulk of the convection zone due to latitudinal shear but an interesting question remains

whether the toroidal field can be stored there long enough to be amplified to high values against magnetic buoyancy. A downward pumping can help in this context as studied by Guerrero and de Gouveia Dal Pino (2008) and Zhang and Jiang (2022) leading to a negligible role of tachocline in the FTD model. The stored toroidal field in the tachocline region that escapes out of the tachocline into the convection zone rises to form sunspots due to magnetic buoyancy indicated by the dark red arrows. The decay of sunspots near the surface indicated by the greyish color gives rise to the poloidal field by the Babcock–Leighton mechanism. The meridional circulation is shown by the black contours. It is equatorward at the bottom of the convection zone so that the toroidal field generated there is advected equatorward, producing sunspots closer to the equator with the progress of the solar cycle. On the other hand, the meridional circulation is poleward near the surface so that the poloidal field generated there is advected poleward.

The first 2D axisymmetric models of the flux transport dynamo were constructed in the mid-1990s (Choudhuri et al. 1995; Durney 1995), although some of the basic ideas were put forth on the basis of a 1D model in an earlier paper by Wang et al. (1991). That the meridional circulation can reverse the direction of the dynamo wave was demonstrated convincingly by Choudhuri et al. (1995) and paved the way for the formulation of the flux transport dynamo model. Within the next few years, different groups studied different aspects of the model (Durney 1997; Dikpati and Charbonneau 1999; Nandy and Choudhuri 2001; Küker et al. 2001; Nandy and Choudhuri 2002; Bonanno et al. 2002; Guerrero and Muñoz 2004; Chatterjee et al. 2004; Choudhuri et al. 2004). This model could explain various aspects of observational data pertaining to the solar cycle, especially the butterfly diagram of sunspots along with the time-latitude distribution of the poloidal field at the surface (Chatterjee et al. 2004).

A majority of the flux transport dynamo calculations assumed such a single-cell meridional flow as shown in Fig. 4. The nature of the meridional circulation deeper down in the convection zone remained uncertain till fairly recently and some groups claimed a more complicated, multi-cellular profile (Zhao et al. 2013) from helioseismology. Global 3D HD and MHD convection simulations (e.g., Passos et al. 2014; Featherstone and Miesch 2015) also reported a multi-cellular meridional flow profile for the Sun. Passos et al. (2015) reported a multi-cell meridional circulation with an equatorward return flow near the base of the convection zone from the mid-latitude. Featherstone and Miesch (2015) found a multi-cell meridional flow for the solar-like differential rotation but a single-cell profile for the slowly rotating stars with anti-solar differential rotation. Subsequent research has shown that under certain circumstances the flux transport paradigm can work even in the presence of complex, multi-cellular meridional flow (Jouve and Brun (2007), Hazra et al. (2014), Hazra and Nandy (2016)). However, helioseismology results from different groups are now converging on a single-cell flow pattern (Rajaguru and Antia 2015; Gizon et al. 2020) in agreement with what had been assumed in the majority of flux transport dynamo calculations, strongly validating the flux transport dynamo model.

The period of the flux transport dynamo is essentially set by the time scale of the meridional circulation. When other parameters are held fixed, the period  $T$  and the amplitude  $v_0$  of the meridional circulation are found to obey the approximate relation

$$T \propto v_0^{-\gamma}. \quad (19)$$

The index  $\gamma$  is found to have a value close to 1 in different models of the flux transport dynamo (Dikpati and Charbonneau 1999; Yeates et al. 2008).

We note as a caveat that flux transport dynamo models incorporating both radial and latitudinal turbulent pumping as gleaned from magnetoconvection simulations can explain

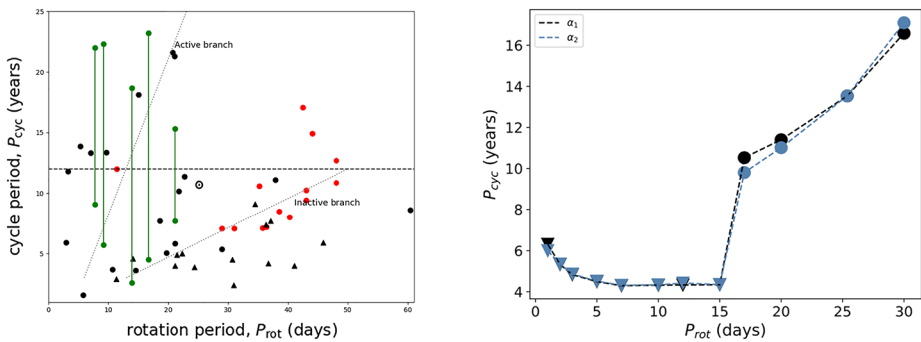
many of the observed features of the solar cycle, even in the absence of meridional circulation – circumventing the constraint of the Parker-Yoshimura sign rule (Hazra et al. 2019). However, unlike meridional circulation, the turbulent pumping profile in the solar convection zone remains completely unconstrained by observations.

One limitation of the 2D axisymmetric models of the flux transport dynamo is that the Babcock–Leighton mechanism is intrinsically a 3D mechanism and can be treated in 2D models only by making drastically simplifying assumptions. In fact, there has been a debate about the best way of treating this mechanism in 2D models (Durney 1997; Nandy and Choudhuri 2001; Muñoz-Jaramillo et al. 2010). One possible approach of handling this mechanism more realistically is to develop 3D kinematic/non-kinematic models in which the magnetic field is treated in 3D so that the dynamics of tilted bipolar sunspots can be computed explicitly (Yeates and Muñoz-Jaramillo 2013; Miesch and Dikpati 2014; Hazra et al. 2017; Hazra and Miesch 2018; Pipin 2022; Bekki and Cameron 2023). An important recent development in this context is a 3D kinematic Babcock–Leighton flux transport dynamo where the buoyant emergence of flux tubes is treated as a dynamic, magnetic field dependent process in a self-consistent manner (Kumar et al. 2019). All the recent developments in the 3D kinematic dynamo models are reviewed by Hazra (2021).

## 5 Extrapolation to Stellar Dynamos

Magnetic field and sun-like magnetic cycle have been observed in many solar-type stars with outer convection zone (e.g., Wilson 1978; Noyes et al. 1984a; Baliunas et al. 1995; Donati et al. 1997). Unlike the Sun, for which we have a lot of detailed observational data available, observation of surface magnetic field for other stars is quite limited. The observational estimate of magnetic activity for other stars mostly comes from indirect proxies of the magnetic field such as measurements of chromospheric Ca II H & K lines (Wilson 1978; Noyes et al. 1984a; Baliunas et al. 1995) and Coronal X-ray emission (Wright et al. 2011; Wright and Drake 2016). Also, one of the major difficulties in measuring stellar activity is that we need a long-term programme for monitoring stars as their cycle period will likely to be commensurate with the 11-year solar cycle period. Thanks to Mount Wilson observatory monitoring program (Wilson 1978), we have long-term data of Ca II H & K flux for 111 stars from spectral type F2-M2 on or near main sequence. Using this data, Noyes et al. (1984a) found that the magnetic activity of stars increases with the rotation rate. Actually, the magnetic activity better correlates with Rossby number, which is a ratio of the rotation period to the convective turnover time. In Fig. 8 of Noyes et al. (1984a), it is shown how the magnetic activity varies with the Rossby number. The magnetic activity first increases rapidly with increasing rotation rate (or decreasing Rossby number), and then it increases very slowly or even seems to be independent of Rossby number for rapidly rotating stars. This result was corroborated by other independent studies from coronal X-ray emission (e.g., Hempelmann et al. 1995; Wright et al. 2011). Zeeman Doppler Imaging (ZDI) technique also (Donati et al. 1997) emerges as a promising way of reconstructing surface magnetic field from other stars. Using this method, Vidotto et al. (2014a) analysed 73 late-F, G, K and M dwarf stars and reported a similar rotation-activity relation. Recently an extensive study by Reiners et al. (2022) of 292 M-dwarfs from CARMENES high resolution spectra also found the same rotation-activity relation.

While stellar activity follows a clear dependency on the rotation rate of the stars, the dependence of the stellar cycle period on rotation is somewhat complicated (Vaughan and Preston 1980; Noyes et al. 1984b). Mount Wilson sample of Ca II H & K shows two distinct



**Fig. 5** Left: Rotational dependency of cycle period from observations -  $P_{cyc}$  vs  $P_{rot}$  plot (Taken from Boro Saikia et al. (2018)). The red symbols are stars with well defined activity cycles, green symbols are stars with multiple activity cycles, and black symbols are for stars with unconfirmed activity cycles. Mount Wilson stars are denoted as filled circles and triangles represent HARPS stars. The active and inactive branches from Böhm-Vitense (2007) are shown in dashed black lines. The Sun is shown as  $\odot$ . Right:  $P_{cyc}$  vs  $P_{rot}$  plot from theoretical model of Hazra et al. (2019). The black and blue colors represent two types of treatment in their Babcock–Leighton  $\alpha$  effect. Stars with quadrupolar and dipolar parities are shown in triangular and circular symbols respectively

branches the active, young one and old slowly rotating one with a gap between them known as Vaughan & Preston gap (Vaughan and Preston 1980). It has been found that the cycle period decreases with decreasing rotation period of the stars in both of the branches. This data was further analysed carefully by many others (Saar and Brandenburg 1999; Saar 2002; Böhm-Vitense 2007) reporting similar trends. Figure 1 from Böhm-Vitense (2007) shows the clear trend of decreasing cycle period with increasing rotation rate along the inactive and active branches. A recent analysis of a larger sample (4454 Cool stars) shows that the Vaughan and Preston gap might be a result of a lack of data in the Wilson sample (Boro Saikia et al. 2018). The left panel of Fig. 5 (taken from Boro Saikia et al. (2018)) shows the  $P_{cyc}$ - $P_{rot}$  diagram for the stars with observed cycle period. The stars with well-defined cycles in their sample show an increasing trend of cycle period with rotation period and there is no clear gap between inactive and active branches of stars. However, as it is clear from the figure, the uncertainty lies in the fast-rotating active branch. Similar results are also reported by Olsper et al. (2018) by an individual probabilistic analysis of the Ca II H & K data.

Many theoretical efforts have been made to understand the relation of magnetic activity and cycle period with rotation period of the stars (e.g., Durney and Robinson 1982; Robinson and Durney 1982; Brandenburg et al. 1994; Nandy 2004; Kitchatinov and Olemskoy 2015; Jouve et al. 2010; Karak et al. 2014b; Strugarek et al. 2017; Warnecke 2018; Hazra et al. 2019). There were some early efforts from traditional  $\alpha\Omega$  mean-field dynamo (Durney and Robinson 1982; Robinson and Durney 1982; Brandenburg et al. 1994), before the importance of meridional circulation was properly recognized in dynamo theory (see Sect. 4 for details), to understand the observational behavior of stars. The observed dependence of magnetic activity on the rotation rate of the star is naturally explained from the mean-field  $\alpha\Omega$  dynamo theory. The  $\Omega$ -effect depends on the differential rotation which is connected to the rotation rate of the star. Also, the  $\alpha$ -effect which is a measure of helical turbulence naturally relates to the rotation rate of the star. However, as the mean-field dynamo model was not able to explain all the properties of cyclic magnetic activity of the Sun, we need more observational constraints on mean-field dynamo parameters for explaining properties of the stellar magnetic activity from the  $\alpha\Omega$  dynamo model. For kinematic dynamo, in the linear

regime, the dynamo can sustain if the dynamo number  $D = \frac{\alpha R^3}{\eta} \frac{1}{r} \frac{\partial \Omega}{\partial r}$  ( $\eta$  is the co-efficient of turbulent diffusivity and  $R$  is the outer stellar radius) exceeds a critical value  $D_c$ . In that case, the period of the dynamo cycle  $P_{\text{cyc}} \propto D^{-1/2}$  (Noyes et al. 1984b). Hence  $P_{\text{cyc}} \propto \Omega^{-1}$ , which is in agreement with the stellar observation. However, in the non-linear regime, where the magnetic field grows until the Lorentz force alters the velocity field to permit some equilibrium, the  $\alpha$ -effect or velocity shear is reduced as the field strength increases. As a result, the dynamo number gets reduced until a steady state is achieved and the cycle period has the approximately same value as it had for  $D = D_c$ . The quenching of dynamo action gives a cycle period almost independent of rotation  $\Omega$ .

Meanwhile, the importance of meridional circulation in the solar dynamo theory, hence the Flux Transport Dynamo (FTD) theory (see Sect. 4 for details) was established to explain many properties of the solar magnetic field (Choudhuri et al. 1995; Chatterjee et al. 2004). The first comprehensive model of FTD for solar-like stars was carried out by Jouve et al. (2010). Two main ingredients of the FTD model differential rotation and meridional circulation were obtained from 3D hydrodynamic simulations as the observational data for them is not available for other stars. The 3D hydrodynamic simulations result a slower meridional circulation with an increasing rotation rate. In FTD models, as the cycle period is inversely proportional to the speed of meridional circulation (Dikpati and Charbonneau 1999; Chatterjee et al. 2004), the computed cycle periods with different rotation rates from these models are not compatible with observations. Similar results were reported from the scaling relation of stellar dynamo (Nandy 2004). Karak et al. (2014b) also constructed a theoretical model for stellar dynamo based on FTD model. They used the differential rotation and meridional circulation for stars with rotation periods of 1 day to 30 days from mean-field hydrodynamic models as presented in Sect. 2. They also reported an increase in the cycle period with increasing rotation rate, as the amplitude of meridional circulation from the mean-field hydrodynamic model decreases with the increasing rotation rate of stars.

Recently, Hazra et al. (2019) extended the study of Karak et al. (2014b) by incorporating radial turbulent pumping. Turbulent pumping was found to be unavoidable in a stratified stellar convection zone due to the topological asymmetric convective flows (Tobias et al. 1998; Käpylä et al. 2006; Miesch and Hindman 2011). A few previous studies in a solar context already showed that pumping is important in transporting poloidal field from the surface to the deeper convection zone and to match the results of FTD models with observed surface magnetic field (Guerrero and de Gouveia Dal Pino 2008; Cameron et al. 2012; Karak and Nandy 2012; Karak and Cameron 2016; Hazra and Nandy 2016). The inclusion of turbulent pumping suppresses the diffusion of the horizontal field and makes the behavior of magnetic field different than the traditional flux transport dynamo model. In addition to explaining the increasing magnetic activity with the rotation, the model of Hazra et al. (2019) can explain the decreasing trend of the cycle period with the increasing rotation rate of stars for the inactive branch of slowly rotating stars. In the right panel of Fig. 5, the dependence of cycle period with the rotation period of the stars is shown for two types of treatment of Babcock–Leighton  $\alpha$  effect with rotation (see Sect. 2.3 in Hazra et al. (2019) for details). A direct comparison of their result (right panel of Fig. 5) with observation of cycle period dependency on rotation (left panel of Fig. 5) shows that the observational trend for the slowly rotating branch upto rotation period of 15 days is reproduced qualitatively well. However, the change of global parity from dipolar to quadrupolar reported in their simulation for the stars with rotation faster than the rotation period of 17 days has no counterpart in the observation. This is because there is no observational study yet regarding parity of the solar-like stars. Also the weak increasing trend of cycle period with faster rotation for stars with rotation period less than 15 days has not been quantified from observation, and hence needs



further careful investigation. The global magnetic field distribution in the Sun and stars, its parity, and the structure of coronal magnetic fields are governed by the dynamo mechanism (Dash et al. 2023) and surface emergence and evolution of magnetic flux (Nandy et al. 2018; Kavanagh et al. 2021). The magnetic field topology in turn determines the global stellar magnetosphere and magnetized stellar wind (Réville et al. 2015; Vidotto et al. 2014b) that play critical roles in star-planet interactions (Das et al. 2019; Basak and Nandy 2021; Carolan et al. 2021) and the forcing of (exo)planetary space environments (Nandy et al. 2021; Hazra et al. 2022). Also, the stellar magnetic cycle alters the total X-ray and EUV (XUV) radiation from host stars affecting exoplanetary atmospheres (Hazra et al. 2020).

There is another idea that the observed dependency of stellar activity cycles on rotation rates might be a manifestation of the dependence on the effective temperature of stars (Kitchatinov 2022). By combining models of differential rotation and dynamo together for stars with different masses, Kitchatinov (2022) found shorter cycles for hotter stars. Also, note that the hotter stars rotate faster on average. Hence computed shorter cycles for hotter stars are basically for fast rotators.

The flux transport dynamo paradigm can in fact be elegantly captured via a mathematical formulation based on time-delay differential equations (Wilmot-Smith et al. 2006). Tripathi et al. (2021) show that such a truncated Babcock–Leighton model imbibing the effects of fluctuations and noise can simultaneously explain the observed bimodal distribution of long-term sunspot time series, the breakdown of gyrochronology relations in middle aged solar-type stars and the relative low activity of the Sun compared to other Sun-like stars. This lends further credence to the philosophy that the basic ideas of flux transport dynamo theory gleaned in the context of the Sun may apply to other solar-like stars and across a substantial phase of solar evolution.

Many 3D global convective simulations of the stellar dynamo are able to reproduce magnetic activity cycle and the solutions of these simulations are close to many features of the solar magnetic field evolution (e.g., Ghizaru et al. 2010; Augustson et al. 2015; Käpylä et al. 2016; Brun et al. 2022). However, there are limited studies (Strugarek et al. 2017; Viviani et al. 2018; Warnecke 2018; Brun et al. 2022) to understand the observed rotational dependencies on magnetic cycles using global dynamo simulations due to computational challenges. Strugarek et al. (2017) explored the  $P_{\text{cyc}} - P_{\text{rot}}$  relation with a limited sample of rotation rates and found that the cycle period is almost inversely proportional to the Rossby numbers. Other simulation by Viviani et al. (2018) found no clear dependency of cycle period with increasing rotation because of the strong non-axisymmetric magnetic field in their simulations. Warnecke (2018) investigated the rotational dependency of magnetic cycles with rotation rates varying by a factor of 30 times. For moderately and rapidly rotating cases, they found well defined cycles but for slowly rotating runs, the magnetic cycles were mostly irregular with longer periods. For moderately and rapidly rotating stars, the cycle period increases weakly with rotation in their simulations contrary to the what have been seen in observations. The global convective simulations produces different results than the mean-field FTD theory possibly because the meridional circulation amplitude has almost no effect in setting up the cycle period, contrary to the FTD models.

## 6 Temporal Variations of the Meridional Circulation and Solar Cycle Fluctuations

Since the period of the flux transport dynamo depends on the strength of the meridional circulation, as indicated in Eq. (19), it is obvious that fluctuations in the meridional circulation

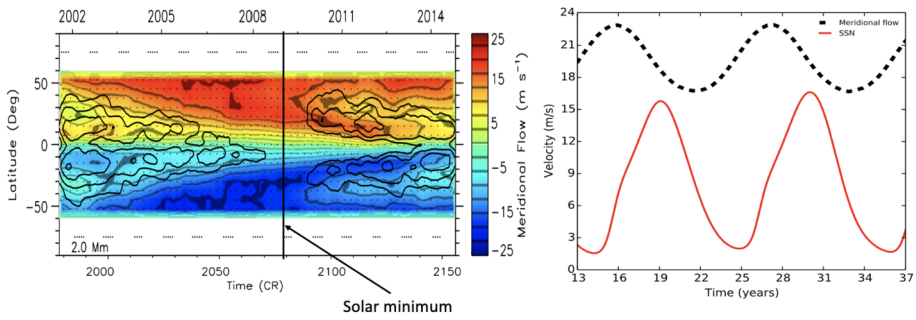
would have an effect on the dynamo. We now discuss what we know about the temporal variations of the meridional circulation and how they may affect the dynamo.

## 6.1 Evidence for Meridional Circulation Variations

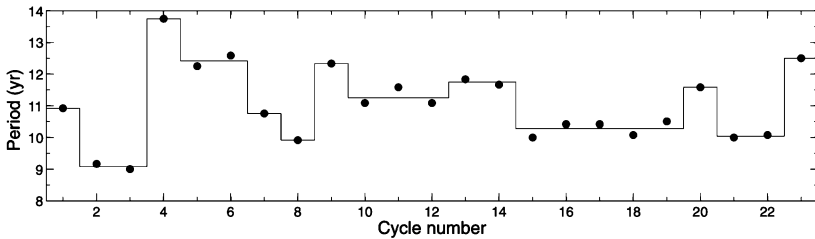
A variation of the meridional circulation with the solar cycle has been inferred both from helioseismology (e.g., Chou and Dai 2001; Beck et al. 2002; Basu and Antia 2010; Komm et al. 2015) and from the tracking of surface markers (Hathaway and Rightmire 2010; Mahajan et al. 2021). It has been found that the meridional circulation becomes weaker at the time of sunspot maximum. From GONG full-disk Dopplergrams and HMI instrument on SDO, Komm et al. (2015) computed the temporal variation of the amplitude of meridional circulation near the surface at three depths of 2.0 Mm, 7.1 Mm and 11.6 Mm over latitudes. In the left panel of Fig. 6, we show the observed meridional flow over time at the depth of 2.0 Mm (taken from Komm et al. (2015)). It is clear from the figure that the amplitude of the meridional flow became weaker near solar maxima around the years 2002 and 2014 and stronger at solar minimum around 2009. This is presumably caused by the back-reaction of the dynamo-generated magnetic field on the large-scale flows. Note that observations of the variation of the meridional flow over the solar cycle could be affected by the inflows towards active regions and they can mimic changes of the overall meridional flow speed (e.g., Brun and Rempel 2009; Cameron and Schüssler 2010). Some effects of the cyclic variation of the meridional circulation can be studied by introducing a simple quenching by the magnetic field (Karak and Choudhuri 2012). However, a proper theoretical understanding requires the solving of Eq. (10) simultaneously with the dynamo equations (Eq. (16) and Eq. (17)). Hazra and Choudhuri (2017) developed a perturbation approach to study this problem. Their result is shown in the right panel of Fig. 6 compares favorably with the observational data as shown in the left panel of Fig. 6. In this context, an independent study by Nandy et al. (2011) claims that a relatively faster meridional flow in the rising phase of the cycle followed by a slower flow in the declining phase (on average throughout the meridional flow loop in the convection zone) can explain the occurrence of unusually deep minima between solar activity cycles; the results of Hazra and Choudhuri (2017) does not appear to be inconsistent with this finding. Another numerical study by Saha et al. (2022) – based on a flux transport dynamo model – indicates that meridional circulation can reproduce the (observed) cyclic modulation of weakened activity during grand minima phases such as the Maunder minimum. However, very long-term observations of surface flow variations do not exist and current capabilities do not allow setting strong constraints on deep flow variations.

It may be noted that the back-reaction of the magnetic field also causes periodic variations in the differential rotation, the so-called torsional oscillations. There have been efforts to model this also within the framework of the flux transport dynamo (e.g., Chakraborty et al. 2009).

We are interested here in the question of whether there are more random, non-periodic variations in the meridional circulation. Since we have reliable observational data about the meridional circulation only for about a quarter century, this question cannot be answered on the basis of direct observations. However, the periods of the cycles depend on the strength of the meridional circulation, as indicated in Eq. (19). A reasonable extrapolation from this suggests that we may use the data about the durations of past cycles to draw inferences about the variations of the meridional circulation (Karak and Choudhuri 2011). In Fig. 7 by plotting the durations of various past cycles, we see that cycles 10 to 14 had an almost constant period somewhat longer than 11 yr, suggesting that the meridional circulation was probably weaker in that era. Then cycles 15 to 19 had an almost constant period somewhat shorter



**Fig. 6** Left panel: Observational estimate of meridional circulation as a function of time and latitude derived from GONG Dopplergrams at depth 2.0 Mm (Taken from Komm et al. (2015)) The black contours show the magnetic activity of magnitude 5, 10, and 20 G. The black vertical line shows the solar minimum. Right panel: Theoretical estimate of variation of meridional circulation with the solar cycle from the model of Hazra and Choudhuri (2017). The black dashed line shows the theoretically computed amplitude of meridional circulation and the red solid line shows two synthetic solar cycles. Adapted from Hazra and Choudhuri (2017)



**Fig. 7** Durations of various solar cycles beginning with the solar cycle 1. The solid filled circles show the observed period of the last 23 cycles. The solid line is for guiding the eye to discern the patterns in the variations of the solar cycle durations. Adapted from Karak and Choudhuri (2011)

than 11 yr, suggesting a stronger meridional circulation at that time. Based on such considerations, Karak and Choudhuri (2011) concluded that the meridional circulation had some random fluctuations with a coherence time of a few decades – perhaps in the range between 20 and 50 yr. Such fluctuations are expected to be a major cause behind the irregularities of the solar cycle.

### 6.2 Possible Causes Behind the Irregularities of the Solar Cycle

The earliest idea for explaining solar cycle irregularities was that this is a manifestation of nonlinear chaos (Weiss et al. 1984). Although the dynamo process certainly involves various kinds of nonlinearities, the most obvious nonlinearities are found not to produce any sustained chaotic behaviour and the various random fluctuations associated with the dynamo may be the more likely candidates for producing the cycle irregularities (Choudhuri 1992). However, there is one kind of observation that is presumably a signature of chaos: the Gnevyshev-Ohl effect obeyed over many cycles that the even cycle was stronger than the previous odd cycle. This is presumably due to period doubling just beyond bifurcation (Charbonneau et al. 2005).

We now try to identify the possible sources of fluctuations in the flux transport dynamo model. The Babcock–Leighton process depends on the tilts of active regions. We see a scat-

ter in the tilt angles (Stenflo and Kosovichev 2012), presumably caused by the turbulent buffeting of flux tubes rising through the convection zone (Longcope and Choudhuri 2002). Choudhuri et al. (2007) proposed that the scatter in tilts gives rise to random fluctuations in the Babcock–Leighton process. This idea enabled them to make the first successful dynamo-based prediction of a solar cycle (Choudhuri et al. 2007; Jiang et al. 2007). More support for this idea has come from observational data (Dasi-Espuig et al. 2010) and simulations (Karak and Miesch 2017). Fluctuations in the Babcock–Leighton process have also been invoked to model the hemispheric asymmetry of sunspot cycles (Goel and Choudhuri 2009) and the Maunder minimum (Choudhuri and Karak 2009).

Since the Babcock–Leighton mechanism eventually builds up the polar field at the end of a cycle, the strength of the polar field gives an indication of the nature of fluctuations in the Babcock–Leighton mechanism during the cycle and is regularly used for modelling actual solar cycles. As we have systematic data of polar fields for not more than half a century, it is important to consider proxies of this field, such as geomagnetic indices (Wang and Sheeley 2009) and polar faculae (Muñoz-Jaramillo et al. 2013), for earlier times. Although the building up of the polar field is a collective process arising from many active regions, there are some indications that large “rogue” sunspot pairs (not satisfying Hale’s polarity law may have a large effect (Jiang et al. 2015; Hazra et al. 2017). Stochastic fluctuations in the source terms for the poloidal field, both in the context of the mean-field  $\alpha$ -effect and the Babcock–Leighton mechanism have been utilized within the flux transport dynamo paradigm to demonstrate the importance of these fluctuations in the occurrence and recovery from grand minima episodes (Hazra et al. 2014; Passos et al. 2014) and in the genesis of hemispheric decoupling and parity modulation in the sunspot cycle (Hazra and Nandy 2019).

One major limitation of using fluctuations in the Babcock–Leighton process alone for explaining the irregularities in the solar cycle is that these fluctuations cannot produce much variations in cycle durations (see however Kitchatinov et al. 2018). To explain the observed variations in the cycle periods, we need something else like the fluctuations in the meridional circulation or other transport coefficients such as turbulent pumping. We now turn to a discussion of the effects that such fluctuations would produce on the dynamo.

### 6.3 The Effects of Random Fluctuations in the Meridional Circulation

Karak (2010) varied the meridional circulation to match the periods of various solar cycles in the twentieth century and found that even the amplitudes of the cycle got matched to a certain extent. This was a clear indication that one of the causes behind the irregularities of the solar cycle was the fluctuations in the meridional circulation.

Suppose the meridional circulation has slowed down due to fluctuations, which will make the cycles longer. Diffusion will have more time to act and will try to make the cycles weaker. This would cause an anti-correlation between the strength of the cycle and its duration. A consequence of stronger cycles having shorter duration is that they should rise faster. The anti-correlation between the rise time and the cycle strength has been known for a long time and is called the Waldmeier effect. Karak and Choudhuri (2011) succeeded in explaining the Waldmeier effect by incorporating fluctuations in the meridional circulation in their dynamo model.

Choudhuri and Karak (2012) developed a comprehensive model of grand minima by including fluctuations in both the Babcock–Leighton process and in the meridional circulation in their dynamo simulations. By analyzing polar ice cores ( $^{14}\text{C}$  data), Usoskin et al. (2007) arrived at the result that there were about 27 grand minima in the last 11,000 yr. The results of Choudhuri and Karak (2012) are in broad agreement with this.

## 6.4 Solar Cycle Fluctuations and Cycle Forecasts

Can we utilize our understanding of solar cycle fluctuations to predict future sunspot cycles. Observations indicate that the polar field is a good precursor of the following sunspot cycle and a dynamo basis for this was already alluded to early on (Schatten et al. 1978). The first suggestion of using dynamo models for forecasting future solar cycle amplitudes – using poloidal field as inputs – was made by Nandy (2002). Subsequently detailed models based on the flux transport paradigm were worked out. It is noteworthy that while a variety of prediction techniques exist in the literature (Petrovay 2020), predictions based on the Babcock–Leighton paradigm and data driven flux transport dynamo models appear to now provide consistent results (Nandy 2021).

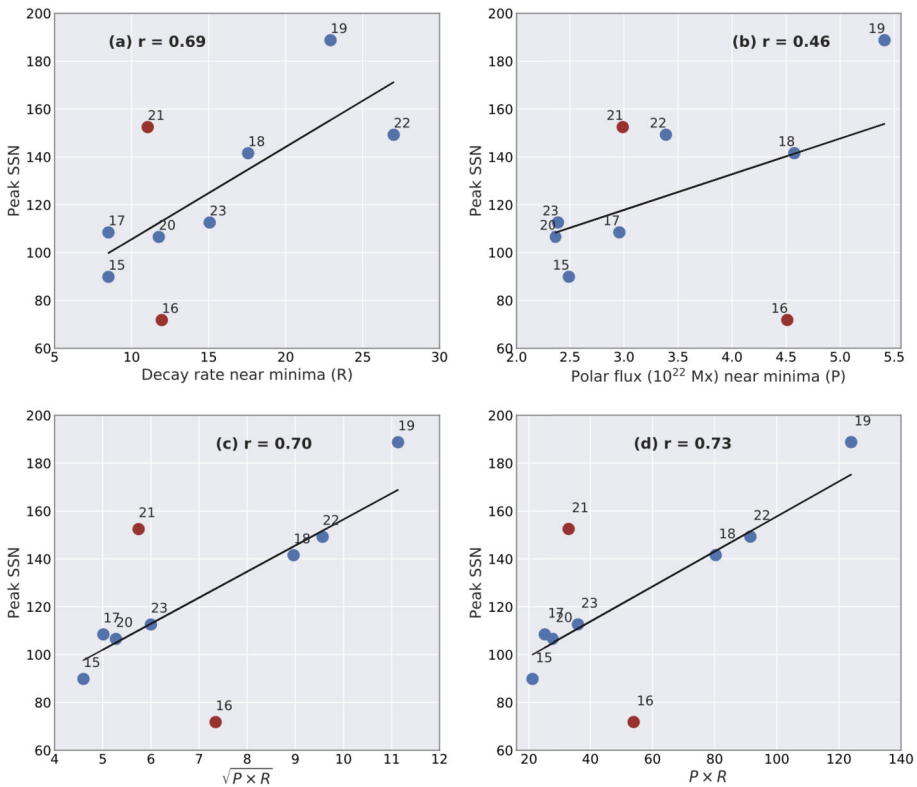
The theoretical explanation of why the polar field is such a good precursor was provided by Jiang et al. (2007), who pointed out that the polar field captures the essential outcome of the fluctuations in the Babcock–Leighton process. A series of papers utilizing the flux transport paradigm and stochastic fluctuations in the Babcock–Leighton source term – established the importance of cycle memory, i.e., the propagation of information of past polar fields to future sunspot cycles (Yeates et al. 2008; Karak and Nandy 2012). However, these studies did not look at aspects related to meridional flow variations.

If fluctuations in the meridional circulation are also important, can we find a precursor to capture the effects of that? It turns out that there is a time lag between the meridional circulation and its effect on the dynamo. The strength of a cycle does not depend on the value of the meridional circulation at the cycle maximum, but on its value a few years earlier – when the previous cycle was decaying. As a result, the decay rate of the previous cycle has a correlation with the strength of the next cycle and provides the appropriate precursor which encapsulates the effect of fluctuations in the meridional circulation (Hazra et al. 2015).

Hazra and Choudhuri (2019) realized that the polar field  $P$  at the end of the previous cycle and the decay rate  $R$  at that time can be the two precursors for predicting the next cycle, corresponding respectively to fluctuations in the Babcock–Leighton mechanism and fluctuations in the meridional circulation. From the data of past cycles, Hazra and Choudhuri (2019) found that an appropriate combination of  $P$  and  $R$  like  $PR$  or  $\sqrt{PR}$  may be a better predictor for the next cycle than  $P$  or  $R$  alone. Figures 8(a) and (b) show the correlation of peak sunspot number of the next cycle with individual precursors  $P$  and  $R$  respectively. The correlations of combined precursors  $\sqrt{PR}$  and  $PR$  with a peak sunspot number of the next cycle are also shown in Figs. 8(c) and (d) respectively. As we see in Fig. 8, the combined precursors give a better correlation than the individual ones. In an era when there had not been a significant fluctuation in the meridional circulation, the polar field  $P$  alone may be a good enough predictor for the next cycle. However, a combination of  $P$  and  $R$  may give a more complete formula for predicting the next cycle under more general circumstances.

## 7 The Future: Towards Bridging Mean Field Approaches, Flux Transport Dynamos and Full Magnetohydrodynamic Simulations

This review, although somewhat limited in scope due to space constraints, reinforces the view that mean field models and the flux transport dynamo paradigm have been very useful in explaining many of the observed properties of the solar cycle, including but not limited to, the latitudinal distribution and equatorward propagation of the sunspot belt, solar cycle fluctuations, parity modulation, and have played a critical role in devising data driven models for solar cycle predictions. The mathematical structure of these solar cycle models



**Fig. 8** The correlation plots of various precursors with the amplitude of the next cycle. Correlations of next cycle amplitude with (a) the decay rate at the late phase of the cycle  $R$ , (b) the polar field near minima of the cycle  $P$  ( $P$  is polar flux in Mx divided by  $10^{22}$ ), (c) the combined new precursor  $\sqrt{P R}$ , and (d)  $P \times R$ . Taken from Hazra and Choudhuri (2019)

is based on the canonical  $\alpha\Omega$  dynamo equations, although in the Babcock–Leighton models, the poloidal source term is motivated from a fundamentally different perspective, or often explicitly added in an ad hoc manner to mimic the buoyant emergence of flux tubes. Moreover, these models rely significantly on a priori prescribed transport coefficients and large-scale flow profiles in stark contrast to full MHD models and magnetoconvection simulations. These appear to be orthogonal approaches and indeed, often these diverse communities have worked in silos. However, rich dividends and transformative progress may result from bridging these approaches and making use of observational constraints, when available.

The mean field, kinematic or flux transport dynamo models rely on multiple processes. The source of the toroidal field, differential rotation, is rather well constrained by helioseismic observations (Howe 2009). The Babcock–Leighton poloidal source is well constrained by near surface observations and is now thought to be the dominant driver of cycle to cycle variability over at least centennial time-scales (Dasi-Espuig et al. 2010; Cameron and Schüssler 2015; Bhowmik and Nandy 2018); these can be adequately captured in data driven surface flux transport models or dynamo models. The meridional circulation is well observed on the solar surface and results for the solar interior are now beginning to converge as already discussed indicating a largely single cell flow threading the solar convection zone



(Rajaguru and Antia 2015; Gizon et al. 2020) in keeping with the typical profile used in flux transport dynamo models.

The origin of the meridional flow seems to be well understood in the mean field theory and the models based on the theory agree closely with the seismologically detected single-cell circulation. The origin of the observed variability in the meridional flow is less certain however. Apart from direct modification by the Lorentz force, meridional flow of Eq. (13) is sensitive to variations in the differential rotation (Rempel 2005) and differential temperature (Spruit 2003). The dominant mechanism for the variability remains to be identified.

Many of the important ingredients which play a crucial role in the kinematic, flux transport dynamo modeling approach are in fact well constrained and we posit this is perhaps one of the underlying reasons for its success. As already argued, such models have in fact been the first to point out the importance of single-cell meridional circulation threading the convection zone, recovering which still remains a challenge for full MHD models, although there is progress towards that direction (Featherstone and Miesch 2015). In addition, the meridional circulation does not play any big role in setting up the cycle period in the 3D MHD model. This is just one of the examples of how the flux transport paradigm may serve as a useful guide for full MHD numerical simulations.

The reverse is also true. There is much that can be gleaned from mean field models of helical turbulent convection and full MHD simulations that are useful inputs for the flux transport models. For example, one of the widely utilized and popular sources of the poloidal field, the mean field  $\alpha$ -effect cannot be directly observed in action. Although challenging and fraught with uncertainties on how to extract these transport coefficients, there are attempts to utilize full MHD models for constraining the mean field poloidal source (Käpylä et al. 2006; Simard et al. 2016; Warnecke et al. 2018; Shimada et al. 2022). Another case in point is the diamagnetic pumping (already discussed in this review) and turbulent pumping of magnetic fields. Full MHD simulations point out that turbulent pumping amplitudes can be effectively comparable or faster than meridional circulation (Käpylä et al. 2006). This has resulted in the construction of flux transport dynamo models that imbibe the physics of turbulent pumping of magnetic flux. Another outstanding issue is the amplitude of the effective turbulent magnetic diffusivity that is utilized in mean field or flux transport dynamo models. While this naturally arises out of turbulent convection driven by convective heat flux, its amplitude in the solar interior remains uncertain. Mixing length theory suggests strong turbulent diffusivity on the order of  $10^{12}$ – $10^{13}$   $\text{cm}^2 \text{s}^{-1}$ ; this sometimes introduces a problem in sustaining dynamo action, although, with low diffusion near the base of the convection zone and diamagnetic pumping, dynamo sustains (Kitchatinov and Olemskoy 2012b). There are also some recent efforts (Karak and Cameron 2016; Hazra et al. 2019) with high turbulent diffusivity  $\sim 10^{12}$   $\text{cm}^2 \text{s}^{-1}$ , which are able to produce magnetic cycles with added turbulent pumping in their model. The magnetic quenching of turbulent diffusivity in flux transport models has been demonstrated to be useful in sustaining magnetic cycles in this context too (Muñoz-Jaramillo et al. 2011). This is another example where ideas from mean field theory, magnetoconvection, and flux transport models come together to provide useful insight.

One fundamental challenge remains. Can one bring out the essence of the Babcock–Leighton mechanism – so successfully utilized in kinematic flux transport dynamo models and now proven to drive cycle to cycle variability – in direct numerical simulations of the solar magnetic cycle? Perhaps this is where the future lies, where ideas gleaned from all these diverse approaches may converge together.

**Acknowledgements** We would like to thank two anonymous referees for their valuable comments that helped to improve the review. GH acknowledges IIT Kanpur Initiation Grant (IITK/PHY/2022386) and ARIEL fellowship for financial support. DN acknowledges support for the Center of Excellence in Space Sciences



India at IISER Kolkata from the Ministry of Education, Government of India and multiple past students for sharing his journey of discovery. LK acknowledges financial support from the Ministry of Science and High Education of the Russian Federation. The research of ARC is supported by an Honorary Professorship from the Indian Institute of Science. All authors also thank International Space Science Institute for supporting the workshop “Solar and Stellar Dynamos: A New Era” where this review originated.

**Author Contribution** Second, third and fourth authors contributed equally to this work.

## Declarations

**Competing Interests** The authors declare no competing interests.

**Open Access** This article is licensed under a Creative Commons Attribution 4.0 International License, which permits use, sharing, adaptation, distribution and reproduction in any medium or format, as long as you give appropriate credit to the original author(s) and the source, provide a link to the Creative Commons licence, and indicate if changes were made. The images or other third party material in this article are included in the article’s Creative Commons licence, unless indicated otherwise in a credit line to the material. If material is not included in the article’s Creative Commons licence and your intended use is not permitted by statutory regulation or exceeds the permitted use, you will need to obtain permission directly from the copyright holder. To view a copy of this licence, visit <http://creativecommons.org/licenses/by/4.0/>.

## References

- Augustson K, Brun AS, Miesch M et al (2015) Grand minima and equatorward propagation in a cycling stellar convective dynamo. *Astrophys J* 809(2):149. <https://doi.org/10.1088/0004-637X/809/2/149>. arXiv:1410.6547 [astro-ph.SR]
- Babcock HW (1961) The topology of the Sun’s magnetic field and the 22-YEAR cycle. *Astrophys J* 133:572. <https://doi.org/10.1086/147060>
- Baliunas SL, Donahue RA, Soon WH et al (1995) Chromospheric variations in main-sequence stars. *Astrophys J* 438:269–287. <https://doi.org/10.1086/175072>
- Basak A, Nandy D (2021) Modelling the imposed magnetospheres of Mars-like exoplanets: star-planet interactions and atmospheric losses. *Mon Not R Astron Soc* 502(3):3569–3581. <https://doi.org/10.1093/mnras/stab225>
- Basu S, Antia HM (2010) Characteristics of solar meridional flows during solar cycle 23. *Astrophys J* 717(1):488–495. <https://doi.org/10.1088/0004-637X/717/1/488>. arXiv:1005.3031 [astro-ph.SR]
- Beck JG, Gizon L, Duvall JTL (2002) A new component of solar dynamics: North-South diverging flows migrating toward the equator with an 11 year period. *Astrophys J Lett* 575(1):L47–L50. <https://doi.org/10.1086/342636>
- Bekki Y, Cameron RH (2023) Three-dimensional non-kinematic simulation of the post-emergence evolution of bipolar magnetic regions and the Babcock–Leighton dynamo of the Sun. *Astron Astrophys* 670:A101. <https://doi.org/10.1051/0004-6361/202244990>. arXiv:2209.08178 [astro-ph.SR]
- Bhowmik P, Nandy D (2018) Prediction of the strength and timing of sunspot cycle 25 reveal decadal-scale space environmental conditions. *Nat Commun* 9:5209. <https://doi.org/10.1038/s41467-018-07690-0>
- Böhm-Vitense E (2007) Chromospheric activity in G and K main-sequence stars, and what it tells us about stellar dynamos. *Astrophys J* 657:486–493. <https://doi.org/10.1086/510482>
- Bonanno A, Elstner D, Rüdiger G et al (2002) Parity properties of an advection-dominated solar  $\alpha^2\Omega$ -dynamo. *Astron Astrophys* 390:673–680. <https://doi.org/10.1051/0004-6361:20020590>. arXiv:astro-ph/0204308 [astro-ph]
- Boro Saikia S, Marvin CJ, Jeffers SV et al (2018) Chromospheric activity catalogue of 4454 cool stars. Questioning the active branch of stellar activity cycles. *Astron Astrophys* 616:A108. <https://doi.org/10.1051/0004-6361/201629518>. arXiv:1803.11123 [astro-ph.SR]
- Brandenburg A, Subramanian K (2005) Astrophysical magnetic fields and nonlinear dynamo theory. *Phys Rep* 417(1–4):1–209. <https://doi.org/10.1016/j.physrep.2005.06.005>
- Brandenburg A, Charbonneau P, Kitchatinov LL et al (1994) Stellar dynamos: the Rossby number dependence. In: Caillault JP (ed) *Cool stars, stellar systems, and the Sun*, p 354
- Brandenburg A, Hubbard A, Käpylä PJ (2015) Dynamical quenching with non-local  $\alpha$  and downward pumping. *Astron Nachr* 336(1):91–96. <https://doi.org/10.1002/asna.201412141>

- Brun AS, Rempel M (2009) Large scale flows in the solar convection zone. *Space Sci Rev* 144(1–4):151–173. <https://doi.org/10.1007/s11214-008-9454-9>
- Brun AS, Strugarek A, Noraz Q et al (2022) Powering stellar magnetism: energy transfers in cyclic dynamos of Sun-like stars. *Astrophys J* 926(1):21. <https://doi.org/10.3847/1538-4357/ac469b>. arXiv:2201.13218 [astro-ph.SR]
- Caligari P, Moreno-Insertis F, Schüssler M (1995) Emerging flux tubes in the solar convection zone. I. Asymmetry, tilt, and emergence latitude. *Astrophys J* 441:886. <https://doi.org/10.1086/175410>
- Cameron RH, Schüssler M (2010) Changes of the solar meridional velocity profile during cycle 23 explained by flows toward the activity belts. *Astrophys J* 720(2):1030–1032. <https://doi.org/10.1088/0004-637X/720/2/1030>. arXiv:1007.2548 [astro-ph.SR]
- Cameron R, Schüssler M (2015) The crucial role of surface magnetic fields for the solar dynamo. *Science* 347(6228):1333–1335. <https://doi.org/10.1126/science.1261470>. arXiv:1503.08469 [astro-ph.SR]
- Cameron RH, Schmitt D, Jiang J et al (2012) Surface flux evolution constraints for flux transport dynamos. *Astron Astrophys* 542:A127. <https://doi.org/10.1051/0004-6361/201218906>. arXiv:1205.1136 [astro-ph.SR]
- Carolan S, Vidotto AA, Hazra G et al (2021) The effects of magnetic fields on observational signatures of atmospheric escape in exoplanets: double tail structures. *Mon Not R Astron Soc* 508(4):6001–6012. <https://doi.org/10.1093/mnras/stab2947>. arXiv:2110.05200 [astro-ph.EP]
- Chae J, Litvinenko YE, Sakurai T (2008) Determination of magnetic diffusivity from high-resolution solar magnetograms. *Astrophys J* 683(2):1153–1159. <https://doi.org/10.1086/590074>
- Chakraborty S, Choudhuri AR, Chatterjee P (2009) Why does the Sun's torsional oscillation begin before the sunspot cycle? *Phys Rev Lett* 102(4):041102. <https://doi.org/10.1103/PhysRevLett.102.041102>. arXiv:0907.4842 [astro-ph.SR]
- Charbonneau P (2014) Solar dynamo theory. *Annu Rev Astron Astrophys* 52:251–290. <https://doi.org/10.1146/annurev-astro-081913-040012>
- Charbonneau P (2020) Dynamo models of the solar cycle. *Living Rev Sol Phys* 17(1):4. <https://doi.org/10.1007/s41116-020-00025-6>
- Charbonneau P, St-Jean C, Zacharias P (2005) Fluctuations in Babcock–Leighton dynamos. I. Period doubling and transition to chaos. *Astrophys J* 619(1):613–622. <https://doi.org/10.1086/426385>
- Chatterjee P, Nandy D, Choudhuri AR (2004) Full-sphere simulations of a circulation-dominated solar dynamo: exploring the parity issue. *Astron Astrophys* 427:1019–1030. <https://doi.org/10.1051/0004-6361:20041199>. arXiv:astro-ph/0405027
- Chou DY, Dai DC (2001) Solar cycle variations of subsurface meridional flows in the Sun. *Astrophys J Lett* 559(2):L175–L178. <https://doi.org/10.1086/323724>
- Choudhuri AR (1989) The evolution of loop structures in flux rings within the solar convection zone. *Sol Phys* 123:217–239. <https://doi.org/10.1007/BF00149104>
- Choudhuri AR (1990) A correction to Spruit's equation for the dynamics of thin flux tubes. *Astron Astrophys* 239(1–2):335–339
- Choudhuri AR (1992) Stochastic fluctuations of the solar dynamo. *Astron Astrophys* 253:277–285
- Choudhuri AR (1998) *The physics of fluids and plasmas: an introduction for astrophysicists*. Cambridge University Press, Cambridge
- Choudhuri AR (2011) The origin of the solar magnetic cycle. *Pramana* 77(1):77–96. <https://doi.org/10.1007/s12043-011-0113-4>. arXiv:1103.3385 [astro-ph.SR]
- Choudhuri AR (2017) Starspots, stellar cycles and stellar flares: lessons from solar dynamo models. *Sci China, Phys Mech Astron* 60(1):19601. <https://doi.org/10.1007/s11433-016-0413-7>. arXiv:1612.02544 [astro-ph.SR]
- Choudhuri AR (2021a) A theoretical estimate of the pole-equator temperature difference and a possible origin of the near-surface shear layer. *Sol Phys* 296(2):37. <https://doi.org/10.1007/s11207-021-01784-7>. arXiv:2008.02983 [astro-ph.SR]
- Choudhuri AR (2021b) The meridional circulation of the Sun: observations, theory and connections with the solar dynamo. *Sci China, Phys Mech Astron* 64(3):239601. <https://doi.org/10.1007/s11433-020-1628-1>. arXiv:2008.09347 [astro-ph.SR]
- Choudhuri AR, Gilman PA (1987) The influence of the Coriolis force on flux tubes rising through the solar convection zone. *Astrophys J* 316:788–800. <https://doi.org/10.1086/165243>
- Choudhuri AR, Karak BB (2009) A possible explanation of the Maunder minimum from a flux transport dynamo model. *Res Astron Astrophys* 9(9):953–958. <https://doi.org/10.1088/1674-4527/9/9/001>. arXiv:0907.3106 [astro-ph.SR]
- Choudhuri AR, Karak BB (2012) Origin of grand minima in sunspot cycles. *Phys Rev Lett* 109:171103. <https://doi.org/10.1103/PhysRevLett.109.171103>. arXiv:1208.3947 [astro-ph.SR]
- Choudhuri AR, Schüssler M, Dikpati M (1995) The solar dynamo with meridional circulation. *Astron Astrophys* 303:L29

- Choudhuri AR, Chatterjee P, Nandy D (2004) Helicity of solar active regions from a dynamo model. *Astrophys J Lett* 615(1):L57–L60. <https://doi.org/10.1086/426054>
- Choudhuri AR, Chatterjee P, Jiang J (2007) Predicting solar cycle 24 with a solar dynamo model. *Phys Rev Lett* 98:131103. <https://doi.org/10.1103/PhysRevLett.98.131103>. arXiv:astro-ph/0701527
- Das SB, Basak A, Nandy D et al (2019) Modeling star-planet interactions in far-out planetary and exoplanetary systems. *Astrophys J* 877(2):80. <https://doi.org/10.3847/1538-4357/ab18ad>. arXiv:1812.07767 [astro-ph.EP]
- Dash S, Nandy D, Usoskin I (2023) Long-term forcing of Sun's coronal field, open flux and cosmic ray modulation potential during grand minima, maxima and regular activity phases by the solar dynamo mechanism. arXiv e-prints. <https://doi.org/10.48550/arXiv.2208.12103>. arXiv:2208.12103 [astro-ph.SR]
- Dasi-Espuig M, Solanki SK, Krivova NA et al (2010) Sunspot group tilt angles and the strength of the solar cycle. *Astron Astrophys* 518:A7. <https://doi.org/10.1051/0004-6361/201014301>. arXiv:1005.1774 [astro-ph.SR]
- Dikpati M, Charbonneau P (1999) A Babcock–Leighton flux transport dynamo with solar-like differential rotation. *Astrophys J* 518(1):508–520. <https://doi.org/10.1086/307269>
- Donati JF, Semel M, Carter BD et al (1997) Spectropolarimetric observations of active stars. *Mon Not R Astron Soc* 291(4):658–682. <https://doi.org/10.1093/mnras/291.4.658>
- Dorch SBF, Nordlund Å (2001) On the transport of magnetic fields by solar-like stratified convection. *Astron Astrophys* 365:562–570. <https://doi.org/10.1051/0004-6361/20000141>
- D'Silva S, Choudhuri AR (1993) A theoretical model for tilts of bipolar magnetic regions. *Astron Astrophys* 272:621
- Durney BR (1995) On a Babcock–Leighton dynamo model with a deep-seated generating layer for the toroidal magnetic field. *Sol Phys* 160:213–235. <https://doi.org/10.1007/BF00732805>
- Durney BR (1996) On the influence of gradients in the angular velocity on the solar meridional motions. *Sol Phys* 169(1):1–32. <https://doi.org/10.1007/BF00153830>
- Durney BR (1997) On a Babcock–Leighton solar dynamo model with a deep-seated generating layer for the toroidal magnetic field. IV. *Astrophys J* 486(2):1065–1077. <https://doi.org/10.1086/304546>
- Durney BR, Robinson RD (1982) On an estimate of the dynamo-generated magnetic fields in late-type stars. *Astrophys J* 253:290–297. <https://doi.org/10.1086/159633>
- Fan Y, Fisher GH, Deluca EE (1993) The origin of morphological asymmetries in bipolar active regions. *Astrophys J* 405:390. <https://doi.org/10.1086/172370>
- Featherstone NA, Miesch MS (2015) Meridional circulation in solar and stellar convection zones. *Astrophys J* 804(1):67. <https://doi.org/10.1088/0004-637X/804/1/67>. arXiv:1501.06501 [astro-ph.SR]
- Frisch U, She ZS, Sulem PL (1987) Large-scale flow driven by the anisotropic kinetic alpha effect. *Phys D, Nonlinear Phenom* 28(3):382–392. [https://doi.org/10.1016/0167-2789\(87\)90026-1](https://doi.org/10.1016/0167-2789(87)90026-1)
- Garaud P, Brummell NH (2008) On the penetration of meridional circulation below the solar convection zone. *Astrophys J* 674(1):498. <https://doi.org/10.1086/524837>
- Ghizaru M, Charbonneau P, Smolarkiewicz PK (2010) Magnetic cycles in global large-eddy simulations of solar convection. *Astrophys J Lett* 715(2):L133–L137. <https://doi.org/10.1088/2041-8205/715/2/L133>
- Gilman PA, Miesch MS (2004) Limits to penetration of meridional circulation below the solar convection zone. *Astrophys J* 611(1):568. <https://doi.org/10.1086/421899>
- Gizon L, Cameron RH, Pourabdian M et al (2020) Meridional flow in the Sun's convection zone is a single cell in each hemisphere. *Science* 368(6498):1469–1472. <https://doi.org/10.1126/science.aaz7119>
- Goel A, Choudhuri AR (2009) The hemispheric asymmetry of solar activity during the last century and the solar dynamo. *Res Astron Astrophys* 9(1):115–126. <https://doi.org/10.1088/1674-4527/9/1/010>. arXiv:0712.3988 [astro-ph]
- Gregory SG, Donati JF, Morin J et al (2012) Can we predict the global magnetic topology of a pre-main-sequence star from its position in the Hertzsprung–Russell diagram? *Astrophys J* 755(2):97. <https://doi.org/10.1088/0004-637X/755/2/97>
- Gruzinov AV, Diamond PH (1994) Self-consistent theory of mean-field electrodynamics. *Phys Rev Lett* 72(11):1651–1653. <https://doi.org/10.1103/PhysRevLett.72.1651>
- Guerrero G, de Gouveia Dal Pino EM (2008) Turbulent magnetic pumping in a Babcock–Leighton solar dynamo model. *Astron Astrophys* 485:267–273. <https://doi.org/10.1051/0004-6361/200809351>. arXiv:0803.3466
- Guerrero GA, Muñoz JD (2004) Kinematic solar dynamo models with a deep meridional flow. *Mon Not R Astron Soc* 350(1):317–322. <https://doi.org/10.1111/j.1365-2966.2004.07655.x>. arXiv:astro-ph/0402097 [astro-ph]
- Hale GE, Ellerman F, Nicholson SB et al (1919) The magnetic polarity of Sun-spots. *Astrophys J* 49:153. <https://doi.org/10.1086/142452>
- Hanasoge SM (2022) Surface and interior meridional circulation in the Sun. *Living Rev Sol Phys* 19(1):3. <https://doi.org/10.1007/s41116-022-00034-7>

- Hathaway DH (2015) The solar cycle. *Living Rev Sol Phys* 12(1):4. <https://doi.org/10.1007/lrsp-2015-4>
- Hathaway DH, Rightmire L (2010) Variations in the Sun's meridional flow over a solar cycle. *Science* 327(5971):1350. <https://doi.org/10.1126/science.1181990>
- Hazra G (2018) Understanding the behavior of the Sun's large scale magnetic field and its relation with the meridional flow. PhD thesis, Indian Institute of Science, Bangalore
- Hazra G (2021) Recent advances in the 3D kinematic Babcock–Leighton solar dynamo modeling. *J Astrophys Astron* 42(2):22. <https://doi.org/10.1007/s12036-021-09738-y>. arXiv:2009.03810 [astro-ph.SR]
- Hazra G, Choudhuri AR (2017) A theoretical model of the variation of the meridional circulation with the solar cycle. *Mon Not R Astron Soc* 472(3):2728–2741. <https://doi.org/10.1093/mnras/stx2152>. arXiv:1708.05204 [astro-ph.SR]
- Hazra G, Choudhuri AR (2019) A new formula for predicting solar cycles. *Astrophys J* 880(2):113. <https://doi.org/10.3847/1538-4357/ab2718>. arXiv:1811.01363 [astro-ph.SR]
- Hazra G, Miesch MS (2018) Incorporating surface convection into a 3D Babcock–Leighton solar dynamo model. *Astrophys J* 864(2):110. <https://doi.org/10.3847/1538-4357/aad556>. arXiv:1804.03100 [astro-ph.SR]
- Hazra S, Nandy D (2016) A proposed paradigm for solar cycle dynamics mediated via turbulent pumping of magnetic flux in Babcock–Leighton-type solar dynamos. *Astrophys J* 832(1):9. <https://doi.org/10.3847/0004-637X/832/1/9>. arXiv:1608.08167 [astro-ph.SR]
- Hazra S, Nandy D (2019) The origin of parity changes in the solar cycle. *Mon Not R Astron Soc* 489(3):4329–4337. <https://doi.org/10.1093/mnras/stz2476>. arXiv:1906.06780 [astro-ph.SR]
- Hazra G, Karak BB, Choudhuri AR (2014) Is a deep one-cell meridional circulation essential for the flux transport solar dynamo? *Astrophys J* 782(2):93. <https://doi.org/10.1088/0004-637X/782/2/93>. arXiv:1309.2838 [astro-ph.SR]
- Hazra S, Passos D, Nandy D (2014) A stochastically forced time delay solar dynamo model: self-consistent recovery from a Maunder-like grand minimum necessitates a mean-field alpha effect. *Astrophys J* 789(1):5. <https://doi.org/10.1088/0004-637X/789/1/5>. arXiv:1307.5751 [astro-ph.SR]
- Hazra G, Karak BB, Banerjee D et al (2015) Correlation between decay rate and amplitude of solar cycles as revealed from observations and dynamo theory. *Sol Phys* 290(6):1851–1870. <https://doi.org/10.1007/s11207-015-0718-8>. arXiv:1410.8641 [astro-ph.SR]
- Hazra G, Choudhuri AR, Miesch MS (2017) A theoretical study of the build-up of the Sun's polar magnetic field by using a 3D kinematic dynamo model. *Astrophys J* 835(1):39. <https://doi.org/10.3847/1538-4357/835/1/39>. arXiv:1610.02726 [astro-ph.SR]
- Hazra G, Jiang J, Karak BB et al (2019) Exploring the cycle period and parity of stellar magnetic activity with dynamo modeling. *Astrophys J* 884(1):35. <https://doi.org/10.3847/1538-4357/ab4128>. arXiv:1909.01286 [astro-ph.SR]
- Hazra G, Vidotto AA, D'Angelo CV (2020) Influence of the Sun-like magnetic cycle on exoplanetary atmospheric escape. *Mon Not R Astron Soc* 496(3):4017–4031. <https://doi.org/10.1093/mnras/staa1815>. arXiv:2006.10634 [astro-ph.SR]
- Hazra G, Vidotto AA, Carolan S et al (2022) The impact of coronal mass ejections and flares on the atmosphere of the hot Jupiter HD189733b. *Mon Not R Astron Soc* 509(4):5858–5871. <https://doi.org/10.1093/mnras/stab3271>. arXiv:2111.04531 [astro-ph.EP]
- Hempelmann A, Schmitt JHMM, Schultz M et al (1995) Coronal X-ray emission and rotation of cool main-sequence stars. *Astron Astrophys* 294:515–524
- Howe R (2009) Solar interior rotation and its variation. *Living Rev Sol Phys* 6(1):1. <https://doi.org/10.12942/lrsp-2009-1>. arXiv:0902.2406 [astro-ph.SR]
- Jha BK, Choudhuri AR (2021) A theoretical model of the near-surface shear layer of the Sun. *Mon Not R Astron Soc* 506(2):2189–2198. <https://doi.org/10.1093/mnras/stab1717>. arXiv:2105.14266 [astro-ph.SR]
- Jiang J, Chatterjee P, Choudhuri AR (2007) Solar activity forecast with a dynamo model. *Mon Not R Astron Soc* 381(4):1527–1542. <https://doi.org/10.1111/j.1365-2966.2007.12267.x>. arXiv:0707.2258 [astro-ph]
- Jiang J, Cameron RH, Schüssler M (2015) The cause of the weak solar cycle 24. *Astrophys J Lett* 808(1):L28. <https://doi.org/10.1088/2041-8205/808/1/L28>. arXiv:1507.01764 [astro-ph.SR]
- Jouve L, Brun AS (2007) On the role of meridional flows in flux transport dynamo models. *Astron Astrophys* 474(1):239–250. <https://doi.org/10.1051/0004-6361/20077070>. arXiv:0712.3200 [astro-ph]
- Jouve L, Brown BP, Brun AS (2010) Exploring the  $P_{\text{Cyc}}$  vs.  $P_{\text{Rot}}$  relation with flux transport dynamo models of solar-like stars. *Astron Astrophys* 509:A32. <https://doi.org/10.1051/0004-6361/200913103>. arXiv:0911.1947 [astro-ph.SR]
- Käpylä PJ, Korpi MJ, Ossendrijver M et al (2006) Magnetoconvection and dynamo coefficients. III.  $\alpha$ -effect and magnetic pumping in the rapid rotation regime. *Astron Astrophys* 455:401–412. <https://doi.org/10.1051/0004-6361/20064972>. arXiv:astro-ph/0602111
- Käpylä MJ, Käpylä PJ, Olsper N et al (2016) Multiple dynamo modes as a mechanism for long-term solar activity variations. *Astron Astrophys* 589:A56. <https://doi.org/10.1051/0004-6361/201527002>. arXiv:1507.05417 [astro-ph.SR]

- Karak BB (2010) Importance of meridional circulation in flux transport dynamo: the possibility of a Maunder-like grand minimum. *Astrophys J* 724:1021–1029. <https://doi.org/10.1088/0004-637X/724/2/1021>. arXiv:1009.2479 [astro-ph.SR]
- Karak BB, Cameron R (2016) Babcock–Leighton solar dynamo: the role of downward pumping and the equatorward propagation of activity. *Astrophys J* 832:94. <https://doi.org/10.3847/0004-637X/832/1/94>. arXiv:1605.06224 [astro-ph.SR]
- Karak BB, Choudhuri AR (2011) The Waldmeier effect and the flux transport solar dynamo. *Mon Not R Astron Soc* 410(3):1503–1512. <https://doi.org/10.1111/j.1365-2966.2010.17531.x>. arXiv:1008.0824 [astro-ph.SR]
- Karak BB, Choudhuri AR (2012) Quenching of meridional circulation in flux transport dynamo models. *Sol Phys* 278(1):137–148. <https://doi.org/10.1007/s11207-012-9928-5>. arXiv:1111.1540 [astro-ph.SR]
- Karak BB, Miesch M (2017) Solar cycle variability induced by tilt angle scatter in a Babcock–Leighton solar dynamo model. *Astrophys J* 847(1):69. <https://doi.org/10.3847/1538-4357/aa8636>. arXiv:1706.08933 [astro-ph.SR]
- Karak BB, Nandy D (2012) Turbulent pumping of magnetic flux reduces solar cycle memory and thus impacts predictability of the Sun's activity. *Astrophys J Lett* 761:L13. <https://doi.org/10.1088/2041-8205/761/1/L13>. arXiv:1206.2106 [astro-ph.SR]
- Karak BB, Jiang J, Miesch MS et al (2014a) Flux transport dynamos: from kinematics to dynamics. *Space Sci Rev* 186(1–4):561–602. <https://doi.org/10.1007/s11214-014-0099-6>
- Karak BB, Kitchatinov LL, Choudhuri AR (2014b) A dynamo model of magnetic activity in solar-like stars with different rotational velocities. *Astrophys J* 791:59. <https://doi.org/10.1088/0004-637X/791/1/59>. arXiv:1402.1874 [astro-ph.SR]
- Kavanagh RD, Vidotto AA, Klein B et al (2021) Planet-induced radio emission from the coronae of M dwarfs: the case of Prox Cen and AU. *Mon Not R Astron Soc* 504(1):1511–1518. <https://doi.org/10.1093/mnras/stab929>. arXiv:2103.16318 [astro-ph.SR]
- Kichatinov LL, Rüdiger G (1992) Magnetic-field advection in inhomogeneous turbulence. *Astron Astrophys* 260(1–2):494–498
- Kitchatinov LL (2016) Rotational shear near the solar surface as a probe for subphotospheric magnetic fields. *Astron Lett* 42(5):339–345. <https://doi.org/10.1134/S10663773716050054>
- Kitchatinov L (2022) The dependence of stellar activity cycles on effective temperature. *Res Astron Astrophys* 22(12):125006. <https://doi.org/10.1088/1674-4527/ac9780>. arXiv:2205.09952 [astro-ph.SR]
- Kitchatinov LL, Nepomnyashchikh AA (2017) A joined model for solar dynamo and differential rotation. *Astron Lett* 43:332–343. <https://doi.org/10.1134/S1066377371704003X>
- Kitchatinov LL, Olemskoy SV (2011a) Alleviation of catastrophic quenching in solar dynamo model with nonlocal  $\alpha$ -effect. *Astron Nachr* 332(5):496–501. <https://doi.org/10.1002/asna.201011549>
- Kitchatinov LL, Olemskoy SV (2011b) Differential rotation of main-sequence dwarfs and its dynamo efficiency. *Mon Not R Astron Soc* 411:1059–1066. <https://doi.org/10.1111/j.1365-2966.2010.17737.x>
- Kitchatinov LL, Olemskoy SV (2012a) Differential rotation of main-sequence dwarfs: predicting the dependence on surface temperature and rotation rate. *Mon Not R Astron Soc* 423(4):3344–3351. <https://doi.org/10.1111/j.1365-2966.2012.21126.x>
- Kitchatinov LL, Olemskoy SV (2012b) Solar dynamo model with diamagnetic pumping and nonlocal  $\alpha$ -effect. *Sol Phys* 276(1–2):3–17. <https://doi.org/10.1007/s11207-011-9887-2>
- Kitchatinov LL, Olemskoy SV (2015) Dynamo saturation in rapidly rotating solar-type stars. *Res Astron Astrophys* 15:1801. <https://doi.org/10.1088/1674-4527/15/11/003>. arXiv:1503.07956 [astro-ph.SR]
- Kitchatinov LL, Pipin VV, Rüdiger G (1994) Turbulent viscosity, magnetic diffusivity, and heat conductivity under the influence of rotation and magnetic field. *Astron Nachr* 315(2):157–170. <https://doi.org/10.1002/asna.2103150205>
- Kitchatinov LL, Mordvinov AV, Nepomnyashchikh AA (2018) Modelling variability of solar activity cycles. *Astron Astrophys* 615:A38. <https://doi.org/10.1051/0004-6361/201732549>. arXiv:1804.02833 [astro-ph.SR]
- Kleeorin N, Rogachevskii I (1994) Effective Ampère force in developed magnetohydrodynamic turbulence. *Phys Rev E* 50(4):2716–2730. <https://doi.org/10.1103/PhysRevE.50.2716>
- Komm R, González Hernández I, Howe R et al (2015) Solar-cycle variation of subsurface meridional flow derived with ring-diagram analysis. *Sol Phys* 290(11):3113–3136. <https://doi.org/10.1007/s11207-015-0729-5>
- Krause F, Rädler KH (1980) Mean-field magnetohydrodynamics and dynamo theory. Pergamon, Oxford
- Küker M, Rüdiger G, Schultz M (2001) Circulation-dominated solar shell dynamo models with positive  $\alpha$ -effect. *Astron Astrophys* 374:301–308. <https://doi.org/10.1051/0004-6361:20010686>
- Kumar R, Jouve L, Nandy D (2019) A 3D kinematic Babcock–Leighton solar dynamo model sustained by dynamic magnetic buoyancy and flux transport processes. *Astron Astrophys* 623:A54. <https://doi.org/10.1051/0004-6361/201834705>. arXiv:1901.04251 [astro-ph.SR]



- Lantz SR, Fan Y (1999) Anelastic magnetohydrodynamic equations for modeling solar and stellar convection zones. *Astrophys J Suppl Ser* 121(1):247–264. <https://doi.org/10.1086/313187>
- Lebedinsky AI (1941) Rotation of the Sun. *Astron J (USSR)* 18(1):10–25
- Leighton RB (1969) A magneto-kinematic model of the solar cycle. *Astrophys J* 156:1. <https://doi.org/10.1086/149943>
- Lifshitz EM, Pitaevskii LP (1981) *Physical kinetics: Landau and Lifshitz course of theoretical physics, vol 10*. Pergamon, Oxford
- Longcope D, Choudhuri AR (2002) The orientational relaxation of bipolar active regions. *Sol Phys* 205:63–92. <https://doi.org/10.1023/A:1013896013842>
- Mahajan SS, Hathaway DH, Muñoz-Jaramillo A et al (2021) Improved measurements of the Sun's meridional flow and torsional oscillation from correlation tracking on MDI and HMI magnetograms. *Astrophys J* 917(2):100. <https://doi.org/10.3847/1538-4357/ac0a80>. [arXiv:2107.07731](https://arxiv.org/abs/2107.07731) [astro-ph.SR]
- Miesch MS, Dikpati M (2014) A three-dimensional Babcock–Leighton solar dynamo model. *Astrophys J Lett* 785(1):L8. <https://doi.org/10.1088/2041-8205/785/1/L8>. [arXiv:1401.6557](https://arxiv.org/abs/1401.6557) [astro-ph.SR]
- Miesch MS, Hindman BW (2011) Gyroscopic pumping in the solar near-surface shear layer. *Astrophys J* 743(1):79. <https://doi.org/10.1088/0004-637X/743/1/79>. [arXiv:1106.4107](https://arxiv.org/abs/1106.4107) [astro-ph.SR]
- Miesch MS, Brun AS, Toomre J (2006) Solar differential rotation influenced by latitudinal entropy variations in the tachocline. *Astrophys J* 641(1):618–625. <https://doi.org/10.1086/499621>
- Moffatt HK (1978) *Magnetic field generation in electrically conducting fluids*. Cambridge University Press, Cambridge
- Muñoz-Jaramillo A, Nandy D, Martens PCH (2009) Helioseismic data inclusion in solar dynamo models. *Astrophys J* 698(1):461–478. <https://doi.org/10.1088/0004-637X/698/1/461>. [arXiv:0811.3441](https://arxiv.org/abs/0811.3441) [astro-ph]
- Muñoz-Jaramillo A, Nandy D, Martens PCH et al (2010) A double-ring algorithm for modeling solar active regions: unifying kinematic dynamo models and surface flux-transport simulations. *Astrophys J Lett* 720(1):L20–L25. <https://doi.org/10.1088/2041-8205/720/1/L20>. [arXiv:1006.4346](https://arxiv.org/abs/1006.4346) [astro-ph.SR]
- Muñoz-Jaramillo A, Nandy D, Martens PCH (2011) Magnetic quenching of turbulent diffusivity: reconciling mixing-length theory estimates with kinematic dynamo models of the solar cycle. *Astrophys J Lett* 727(1):L23. <https://doi.org/10.1088/2041-8205/727/1/L23>. [arXiv:1007.1262](https://arxiv.org/abs/1007.1262) [astro-ph.SR]
- Muñoz-Jaramillo A, Dasi-Espuig M, Balmaceda LA et al (2013) Solar cycle propagation, memory, and prediction: insights from a century of magnetic proxies. *Astrophys J Lett* 767(2):L25. <https://doi.org/10.1088/2041-8205/767/2/L25>. [arXiv:1304.3151](https://arxiv.org/abs/1304.3151) [astro-ph.SR]
- Nandy D (2002) Can theoretical solar dynamo models predict future solar activity? In: 34th COSPAR scientific assembly. p 53
- Nandy D (2004) Exploring magnetic activity from the Sun to the stars. *Sol Phys* 224:161–169. <https://doi.org/10.1007/s11207-005-4990-x>
- Nandy D (2021) Progress in solar cycle predictions: sunspot cycles 24–25 in perspective. *Sol Phys* 296(3):54. <https://doi.org/10.1007/s11207-021-01797-2>. [arXiv:2009.01908](https://arxiv.org/abs/2009.01908) [astro-ph.SR]
- Nandy D, Choudhuri AR (2001) Toward a mean field formulation of the Babcock–Leighton type solar dynamo. I.  $\alpha$ -coefficient versus Durney's double-ring approach. *Astrophys J* 551(1):576–585. <https://doi.org/10.1086/320057>. [arXiv:astro-ph/0107466](https://arxiv.org/abs/astro-ph/0107466) [astro-ph]
- Nandy D, Choudhuri AR (2002) Explaining the latitudinal distribution of sunspots with deep meridional flow. *Science* 296(5573):1671–1673. <https://doi.org/10.1126/science.1070955>
- Nandy D, Muñoz-Jaramillo A, Martens PCH (2011) The unusual minimum of sunspot cycle 23 caused by meridional plasma flow variations. *Nature* 471(7336):80–82. <https://doi.org/10.1038/nature09786>. [arXiv:1303.0349](https://arxiv.org/abs/1303.0349) [astro-ph.SR]
- Nandy D, Bhowmik P, Yeates AR et al (2018) The large-scale coronal structure of the 2017 August 21 great American eclipse: an assessment of solar surface flux transport model enabled predictions and observations. *Astrophys J* 853(1):72. <https://doi.org/10.3847/1538-4357/aaa1eb>
- Nandy D, Martens PCH, Obridko V et al (2021) Solar evolution and extrema: current state of understanding of long-term solar variability and its planetary impacts. *Prog Earth Planet Sci* 8(1):40. <https://doi.org/10.1186/s40645-021-00430-x>
- Noyes RW, Hartmann LW, Baliunas SL et al (1984a) Rotation, convection, and magnetic activity in lower main-sequence stars. *Astrophys J* 279:763–777. <https://doi.org/10.1086/161945>
- Noyes RW, Weiss NO, Vaughan AH (1984b) The relation between stellar rotation rate and activity cycle periods. *Astrophys J* 287:769–773. <https://doi.org/10.1086/162735>
- Olsper N, Lehtinen JJ, Käpylä MJ et al (2018) Estimating activity cycles with probabilistic methods. II. The Mount Wilson Ca H&K data. *Astron Astrophys* 619:A6. <https://doi.org/10.1051/0004-6361/201732525>. [arXiv:1712.08240](https://arxiv.org/abs/1712.08240) [astro-ph.SR]
- Ossendrijver M, Stix M, Brandenburg A et al (2002) Magnetoconvection and dynamo coefficients. II. Field-direction dependent pumping of magnetic field. *Astron Astrophys* 394:735–745. <https://doi.org/10.1051/0004-6361:20021224>

- Parker EN (1955a) Hydromagnetic dynamo models. *Astrophys J* 122:293–314. <https://doi.org/10.1086/146087>
- Parker EN (1955b) The formation of sunspots from the solar toroidal field. *Astrophys J* 121:491. <https://doi.org/10.1086/146010>
- Parker EN (1979) *Cosmical magnetic fields: their origin and their activity*. Clarendon, Oxford
- Passos D, Nandy D, Hazra S et al (2014) A solar dynamo model driven by mean-field alpha and Babcock–Leighton sources: fluctuations, grand-minima-maxima, and hemispheric asymmetry in sunspot cycles. *Astron Astrophys* 563:A18. <https://doi.org/10.1051/0004-6361/201322635>. arXiv:1309.2186 [astro-ph.SR]
- Passos D, Charbonneau P, Miesch M (2015) Meridional circulation dynamics from 3D magnetohydrodynamic global simulations of solar convection. *Astrophys J Lett* 800(1):L18. <https://doi.org/10.1088/2041-8205/800/1/L18>. arXiv:1502.01154 [astro-ph.SR]
- Petrovay K (2020) Solar cycle prediction. *Living Rev Sol Phys* 17(1):2. <https://doi.org/10.1007/s41116-020-0022-z>. arXiv:1907.02107 [astro-ph.SR]
- Pipin VV (2008) The mean electro-motive force and current helicity under the influence of rotation, magnetic field and shear. *Geophys Astrophys Fluid Dyn* 102:21–49. <https://doi.org/10.1080/03091920701374772>
- Pipin VV (2022) On the effect of surface bipolar magnetic regions on the convection zone dynamo. *Mon Not R Astron Soc* 514(1):1522–1534. <https://doi.org/10.1093/mnras/stac1434>. arXiv:2112.09460 [astro-ph.SR]
- Pipin VV, Kosovichev AG (2020) Torsional oscillations in dynamo models with fluctuations and potential for helioseismic predictions of the solar cycles. *Astrophys J* 900(1):26. <https://doi.org/10.3847/1538-4357/aba4ad>
- Rädler KH (1968) On the electrodynamics of conducting fluids in turbulent motion. II. Turbulent conductivity and turbulent permeability. *Z Naturforsch Teil A* 23:1851–1860. <https://doi.org/10.1515/zna-1968-1124>
- Rajaguru SP, Antia HM (2015) Meridional circulation in the solar convection zone: time-distance helioseismic inferences from four years of HMI/SDO observations. *Astrophys J* 813(2):114. <https://doi.org/10.1088/0004-637X/813/2/114>
- Reiners A, Shulyak D, Käpylä PJ et al (2022) Magnetism, rotation, and nonthermal emission in cool stars. Average magnetic field measurements in 292 M dwarfs. *Astron Astrophys* 662:A41. <https://doi.org/10.1051/0004-6361/202243251>. arXiv:2204.00342 [astro-ph.SR]
- Rempel M (2005) Influence of random fluctuations in the  $\Lambda$ -effect on meridional flow and differential rotation. *Astrophys J* 631(2):1286–1292. <https://doi.org/10.1086/432610>
- Réville V, Brun AS, Matt SP et al (2015) The effect of magnetic topology on thermally driven wind: toward a general formulation of the braking law. *Astrophys J* 798(2):116. <https://doi.org/10.1088/0004-637X/798/2/116>. arXiv:1410.8746 [astro-ph.SR]
- Roberts PH (1972) Kinematic dynamo models. *Philos Trans R Soc Lond Ser A* 272(1230):663–698. <https://doi.org/10.1098/rsta.1972.0074>
- Robinson RD, Durney BR (1982) On the generation of magnetic fields in late-type stars – a local time-dependent dynamo model. *Astron Astrophys* 108:322–325
- Rüdiger G (1989) *Differential rotation and stellar convection. Sun and the solar stars*. Akademie Verlag, Berlin
- Rüdiger G, Egorov P, Kitchatinov LL et al (2005) The eddy heat-flux in rotating turbulent convection. *Astron Astrophys* 431:345–352. <https://doi.org/10.1051/0004-6361:20041670>
- Rüdiger G, Kitchatinov LL, Schultz M (2012) Suppression of the large-scale Lorentz force by turbulence. *Astron Nachr* 333(1):84–91. <https://doi.org/10.1002/asna.201111635>
- Rüdiger G, Kitchatinov LL, Hollerbach R (2013) *Magnetic processes in astrophysics: theory, simulations, experiments*. Wiley-VCH, Weinheim
- Saar S (2002) Stellar dynamos: scaling laws and coronal connections. In: Favata F, Drake JJ (eds) *Stellar Coronae in the Chandra and XMM-NEWTON Era*, p 311
- Saar SH, Brandenburg A (1999) Time evolution of the magnetic activity cycle period. II. Results for an expanded stellar sample. *Astrophys J* 524:295–310. <https://doi.org/10.1086/307794>
- Saha C, Chandra S, Nandy D (2022) Evidence of persistence of weak magnetic cycles driven by meridional plasma flows during solar grand minima phases. *Mon Not R Astron Soc* 517(1):L36–L40. <https://doi.org/10.1093/mnras/slac104>. arXiv:2209.14651 [astro-ph.SR]
- Schatten KH, Scherrer PH, Svalgaard L et al (1978) Using dynamo theory to predict the sunspot number during solar cycle 21. *Geophys Res Lett* 5(5):411–414. <https://doi.org/10.1029/GL005i005p00411>
- Schou J, Antia HM, Basu S et al (1998) Helioseismic studies of differential rotation in the solar envelope by the solar oscillations investigation using the Michelson Doppler imager. *Astrophys J* 505:390–417. <https://doi.org/10.1086/306146>
- Shimada R, Hotta H, Yokoyama T (2022) Mean-field analysis on large-scale magnetic fields at high Reynolds numbers. *Astrophys J* 935(1):55. <https://doi.org/10.3847/1538-4357/ac7e43>. arXiv:2207.01639 [astro-ph.SR]



- Simard C, Charbonneau P, Dubé C (2016) Characterisation of the turbulent electromotive force and its magnetically-mediated quenching in a global EULAG-MHD simulation of solar convection. *Adv Space Res* 58(8):1522–1537. <https://doi.org/10.1016/j.asr.2016.03.041>. arXiv:1604.01533 [astro-ph.SR]
- Spence EJ, Nornberg MD, Jacobson CM et al (2007) Turbulent diamagnetism in flowing liquid sodium. *Phys Rev Lett* 98(16):164503. <https://doi.org/10.1103/PhysRevLett.98.164503>
- Spruit HC (1981) Motion of magnetic flux tubes in the solar convection zone and chromosphere. *Astron Astrophys* 98:155–160
- Spruit HC (2003) Origin of the torsional oscillation pattern of solar rotation. *Sol Phys* 213(1):1–21. <https://doi.org/10.1023/A:1023202605379>
- Spruit H (2012) Theories of the solar cycle and its effect on climate. *Prog Theor Phys Suppl* 195:185–200. <https://doi.org/10.1143/PTPS.195.185>
- Steenbeck M, Krause F (1969) On the dynamo theory of stellar and planetary magnetic fields. I. AC dynamos of solar type. *Astron Nachr* 291:49–84. <https://doi.org/10.1002/asna.19692910201>
- Steenbeck M, Krause F, Rädler KH (1966) Berechnung der mittleren Lorentz-Feldstärke  $\times \mathbf{v} \times \mathbf{B}$  für ein elektrisch leitendes Medium in turbulenter, durch Coriolis-Kräfte beeinflusster Bewegung (A calculation of the mean electromotive force in an electrically conducting fluid in turbulent motion, under the influence of Coriolis forces). *Z Naturforsch Teil A* 21:369–376. <https://doi.org/10.1515/zna-1966-0401>
- Stenflo JO, Kosovichev AG (2012) Bipolar magnetic regions on the sun: global analysis of the SOHO/MDI data set. *Astrophys J* 745:129. <https://doi.org/10.1088/0004-637X/745/2/129>. arXiv:1112.5226 [astro-ph.SR]
- Stix M (1976) Differential rotation and the solar dynamo. *Astron Astrophys* 47(2):243–254
- Strugarek A, Beaudoin P, Charbonneau P et al (2017) Reconciling solar and stellar magnetic cycles with nonlinear dynamo simulations. *Science* 357(6347):185–187. <https://doi.org/10.1126/science.aal3999>. arXiv:1707.04335 [astro-ph.SR]
- Tobias SM, Brummell NH, Clune TL et al (1998) Pumping of magnetic fields by turbulent penetrative convection. *Astrophys J Lett* 502(2):L177–L180. <https://doi.org/10.1086/311501>
- Tripathi B, Nandy D, Banerjee S (2021) Stellar mid-life crisis: subcritical magnetic dynamos of solar-like stars and the breakdown of gyrochronology. *Mon Not R Astron Soc* 506(1):L50–L54. <https://doi.org/10.1093/mnras/slab035>. arXiv:1812.05533 [astro-ph.SR]
- Usoskin IG, Solanki SK, Kovaltsov GA (2007) Grand minima and maxima of solar activity: new observational constraints. *Astron Astrophys* 471(1):301–309. <https://doi.org/10.1051/0004-6361:20077704>. arXiv:0706.0385 [astro-ph]
- Vaughan AH, Preston GW (1980) A survey of chromospheric CA II H and K emission in field stars of the solar neighborhood. *Publ Astron Soc Pac* 92:385–391. <https://doi.org/10.1086/130683>
- Vidotto AA, Gregory SG, Jardine M et al (2014a) Stellar magnetism: empirical trends with age and rotation. *Mon Not R Astron Soc* 441:2361–2374. <https://doi.org/10.1093/mnras/stu728>. arXiv:1404.2733 [astro-ph.SR]
- Vidotto AA, Jardine M, Morin J et al (2014b) M-dwarf stellar winds: the effects of realistic magnetic geometry on rotational evolution and planets. *Mon Not R Astron Soc* 438(2):1162–1175. <https://doi.org/10.1093/mnras/stt2265>. arXiv:1311.5063 [astro-ph.SR]
- Viviani M, Warnecke J, Käpylä MJ et al (2018) Transition from axi- to nonaxisymmetric dynamo modes in spherical convection models of solar-like stars. *Astron Astrophys* 616:A160. <https://doi.org/10.1051/0004-6361/201732191>. arXiv:1710.10222 [astro-ph.SR]
- Wang YM, Sheeley NR (2009) Understanding the geomagnetic precursor of the solar cycle. *Astrophys J Lett* 694(1):L11–L15. <https://doi.org/10.1088/0004-637X/694/1/L11>
- Wang YM, Nash AG, Sheeley NR, Jr (1989) Evolution of the Sun's polar fields during sunspot cycle 21: poleward surges and long-term behavior. *Astrophys J* 347:529. <https://doi.org/10.1086/168143>
- Wang YM, Sheeley NR, Jr, Nash AG (1991) A new solar cycle model including meridional circulation. *Astrophys J* 383:431. <https://doi.org/10.1086/170800>
- Warnecke J (2018) Dynamo cycles in global convection simulations of solar-like stars. *Astron Astrophys* 616:A72. <https://doi.org/10.1051/0004-6361/201732413>. arXiv:1712.01248 [astro-ph.SR]
- Warnecke J, Rheinhardt M, Tuomisto S et al (2018) Turbulent transport coefficients in spherical wedge dynamo simulations of solar-like stars. *Astron Astrophys* 609:A51. <https://doi.org/10.1051/0004-6361/201628136>. arXiv:1601.03730 [astro-ph.SR]
- Warnecke J, Rheinhardt M, Viviani M et al (2021) Investigating global convective dynamos with mean-field models: full spectrum of turbulent effects required. *Astrophys J Lett* 919(2):L13. <https://doi.org/10.3847/2041-8213/ac1db5>. arXiv:2105.07708 [astro-ph.SR]
- Weiss NO, Cattaneo F, Jones CA (1984) Periodic and aperiodic dynamo waves. *Geophys Astrophys Fluid Dyn* 30(4):305–341. <https://doi.org/10.1080/03091928408219262>
- Wilmot-Smith AL, Nandy D, Hornig G et al (2006) A time delay model for solar and stellar dynamos. *Astrophys J* 652(1):696–708. <https://doi.org/10.1086/508013>

- Wilson OC (1978) Chromospheric variations in main-sequence stars. *Astrophys J* 226:379–396. <https://doi.org/10.1086/156618>
- Wright NJ, Drake JJ (2016) Solar-type dynamo behaviour in fully convective stars without a tachocline. *Nature* 535:526–528. <https://doi.org/10.1038/nature18638>. arXiv:1607.07870 [astro-ph.SR]
- Wright NJ, Drake JJ, Mamajek EE et al (2011) The stellar-activity-rotation relationship and the evolution of stellar dynamos. *Astrophys J* 743:48. <https://doi.org/10.1088/0004-637X/743/1/48>. arXiv:1109.4634 [astro-ph.SR]
- Yeates AR, Muñoz-Jaramillo A (2013) Kinematic active region formation in a three-dimensional solar dynamo model. *Mon Not R Astron Soc* 436(4):3366–3379. <https://doi.org/10.1093/mnras/stt1818>. arXiv:1309.6342 [astro-ph.SR]
- Yeates AR, Nandy D, Mackay DH (2008) Exploring the physical basis of solar cycle predictions: flux transport dynamics and persistence of memory in advection- versus diffusion-dominated solar convection zones. *Astrophys J* 673(1):544–556. <https://doi.org/10.1086/524352>. arXiv:0709.1046 [astro-ph]
- Yoshimura H (1975) Solar-cycle dynamo wave propagation. *Astrophys J* 201:740–748. <https://doi.org/10.1086/153940>
- Zeldovich YB (1957) Magnetic field in two-dimensional turbulence of conducting fluid. *J Exp Theor Phys* 4:460–462
- Zhang Z, Jiang J (2022) A Babcock–Leighton-type solar dynamo operating in the bulk of the convection zone. *Astrophys J* 930(1):30. <https://doi.org/10.3847/1538-4357/ac6177>. arXiv:2204.14077 [astro-ph.SR]
- Zhao J, Bogart RS, Kosovichev AG et al (2013) Detection of equatorward meridional flow and evidence of double-cell meridional circulation inside the Sun. *Astrophys J Lett* 774(2):L29. <https://doi.org/10.1088/2041-8205/774/2/L29>. arXiv:1307.8422 [astro-ph.SR]

**Publisher's Note** Springer Nature remains neutral with regard to jurisdictional claims in published maps and institutional affiliations.

## Authors and Affiliations

Gopal Hazra<sup>1,2</sup>  · Dibyendu Nandy<sup>3,4</sup> · Leonid Kitchatinov<sup>5</sup> · Arnab Rai Choudhuri<sup>6,7</sup>

✉ G. Hazra  
[hazra@iitk.ac.in](mailto:hazra@iitk.ac.in)

D. Nandy  
[dnandi@iiserkol.ac.in](mailto:dnandi@iiserkol.ac.in)

L. Kitchatinov  
[kit@iszf.irk.ru](mailto:kit@iszf.irk.ru)

A.R. Choudhuri  
[arnab@iisc.ac.in](mailto:arnab@iisc.ac.in)

<sup>1</sup> Dept. of Physics, Indian Institute of Technology, Kanpur, Kalyanpur, Kanpur, 208060, Uttar Pradesh, India

<sup>2</sup> Dept. of Astrophysics, University of Vienna, Türkenschanzstraße 17, Vienna, 1180, Austria

<sup>3</sup> Department of Physical Sciences, Indian Institute of Science Education and Research, Kolkata, Mohanpur, Kolkata, 741 246, WB, India

<sup>4</sup> Center of Excellence in Space Sciences India, Indian Institute of Science Education and Research, Kolkata, Mohanpur, Kolkata, 741 246, WB, India

<sup>5</sup> Institute of Solar-Terrestrial Physics SB RAS, Lermontov Str. 126a, Irkutsk, 664033, Russia

<sup>6</sup> Dept. of Physics, Indian Institute of Science, C V Raman Avenue, Bengaluru, 560012, Karnataka, India

<sup>7</sup> Max Planck Institute for the History of Science, Boltzmannstrasse 22, Berlin, 14195, Germany