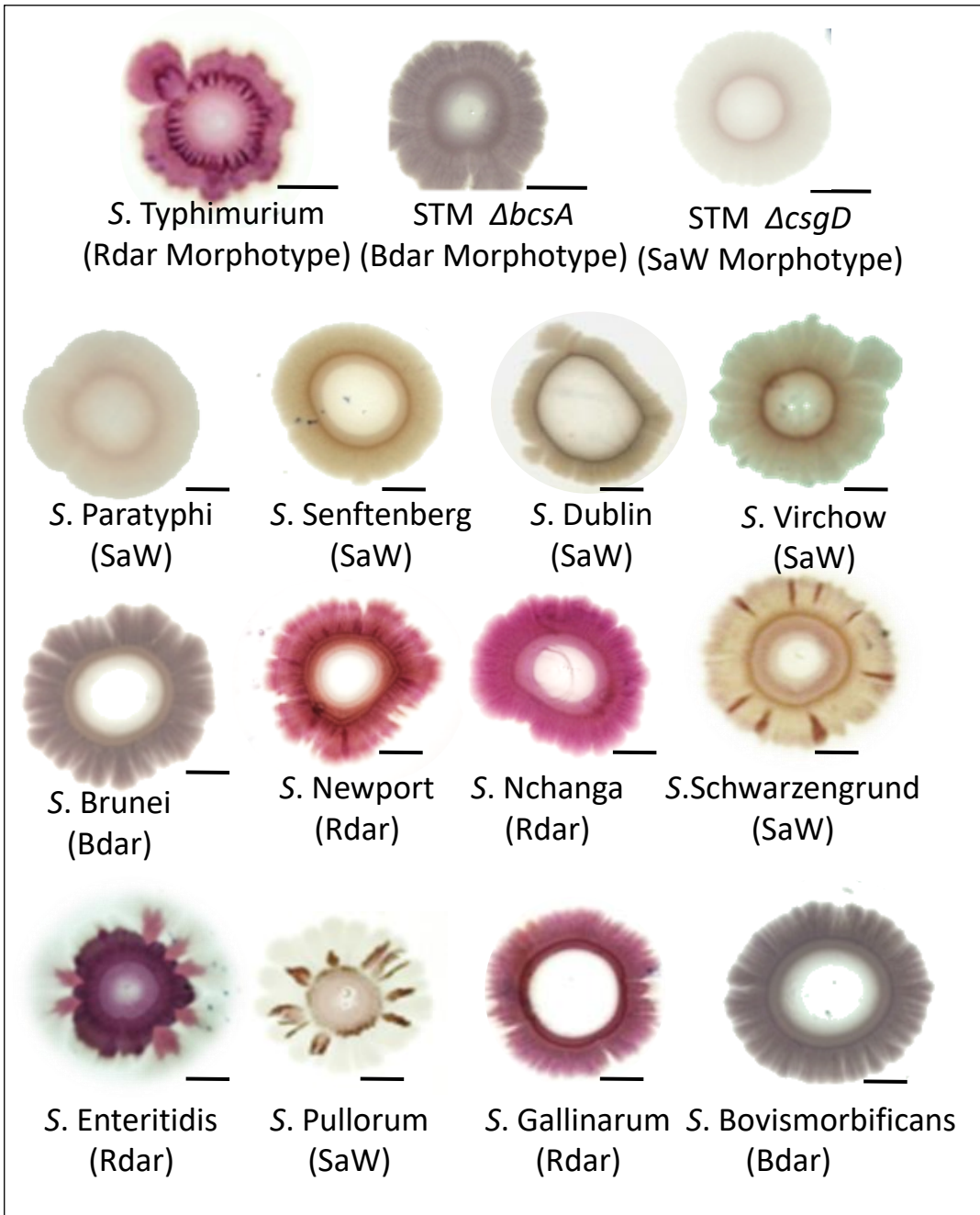
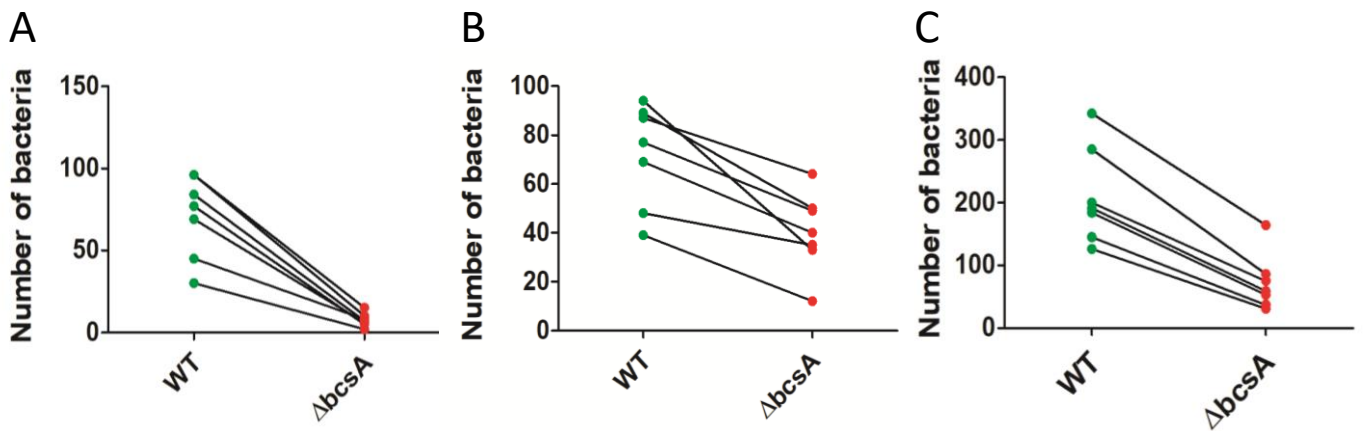


Supporting Information Figure S1: Bacterial count for various serovars in the root of *Arabidopsis* ecotypes Col-0, CEN, C24 and Ler. Heat map representation of mean bacterial CFU on 4 *Arabidopsis* ecotypes.

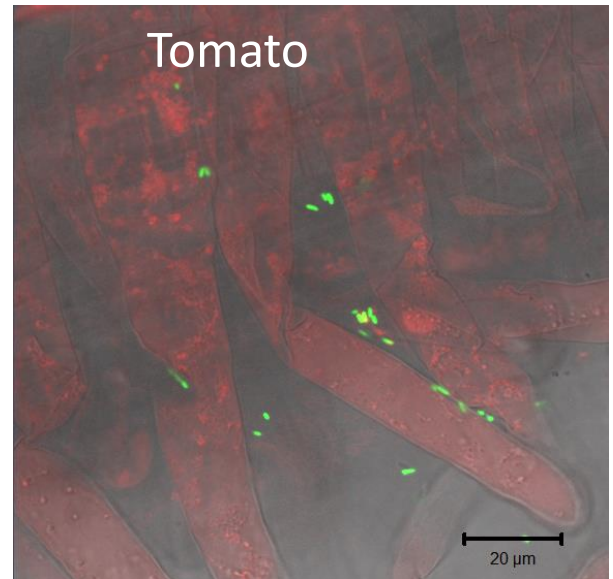
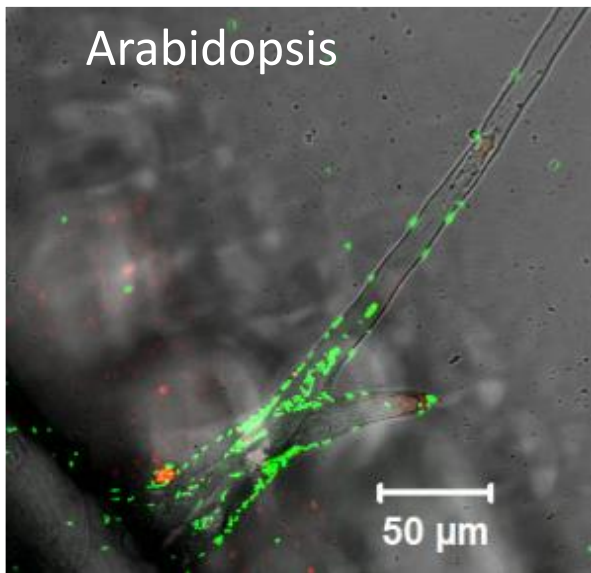


Supporting Information Figure S2: Selection of *Salmonella* serovar for infection. Morphotype of 16 *Salmonella* serovars on Congo Red / Comassie Brilliant Blue LB plate with 0.5% agar. Scale bar=5mm.

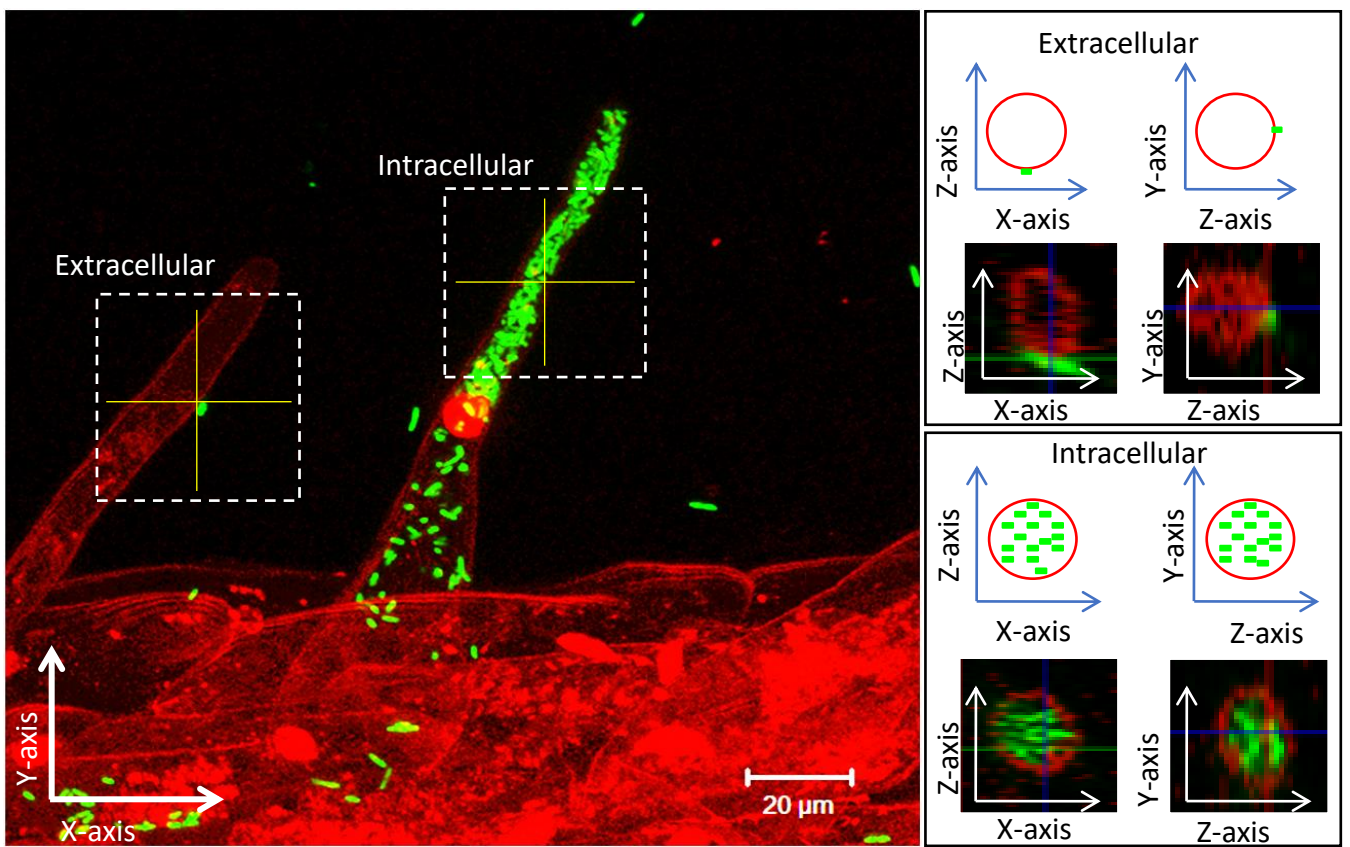


Supporting Information Figure S3: Number of bacterial cells in the field of view (A) zone of elongation, (B) zone of maturation and (C) zone of differentiation as seen under confocal microscope. 7 independent plants were subjected to microscopy. The connecting lines signifies the number of the WT and mutant bacteria in one plant root.

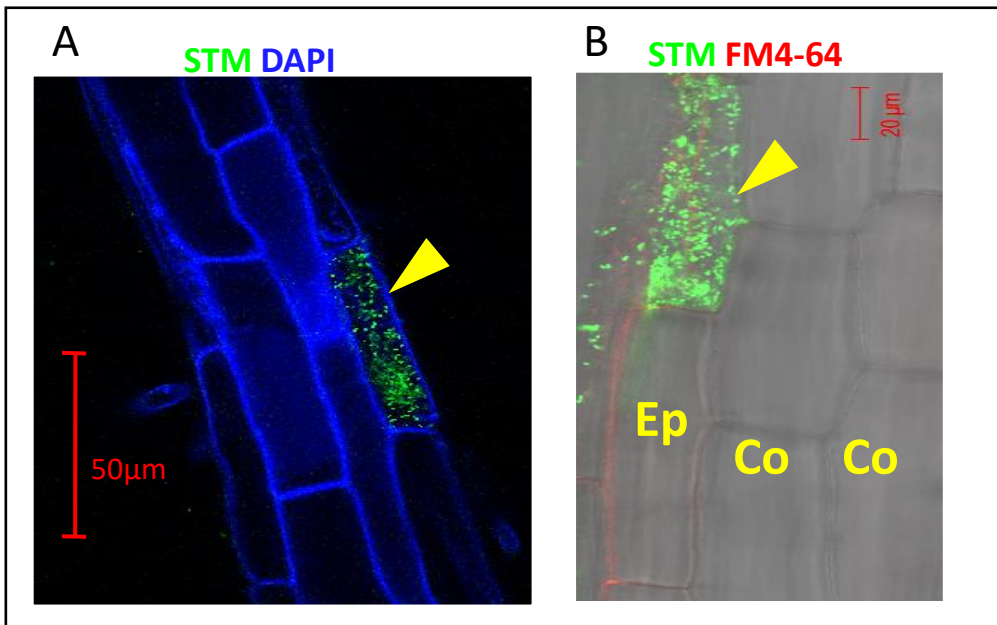
PI STM



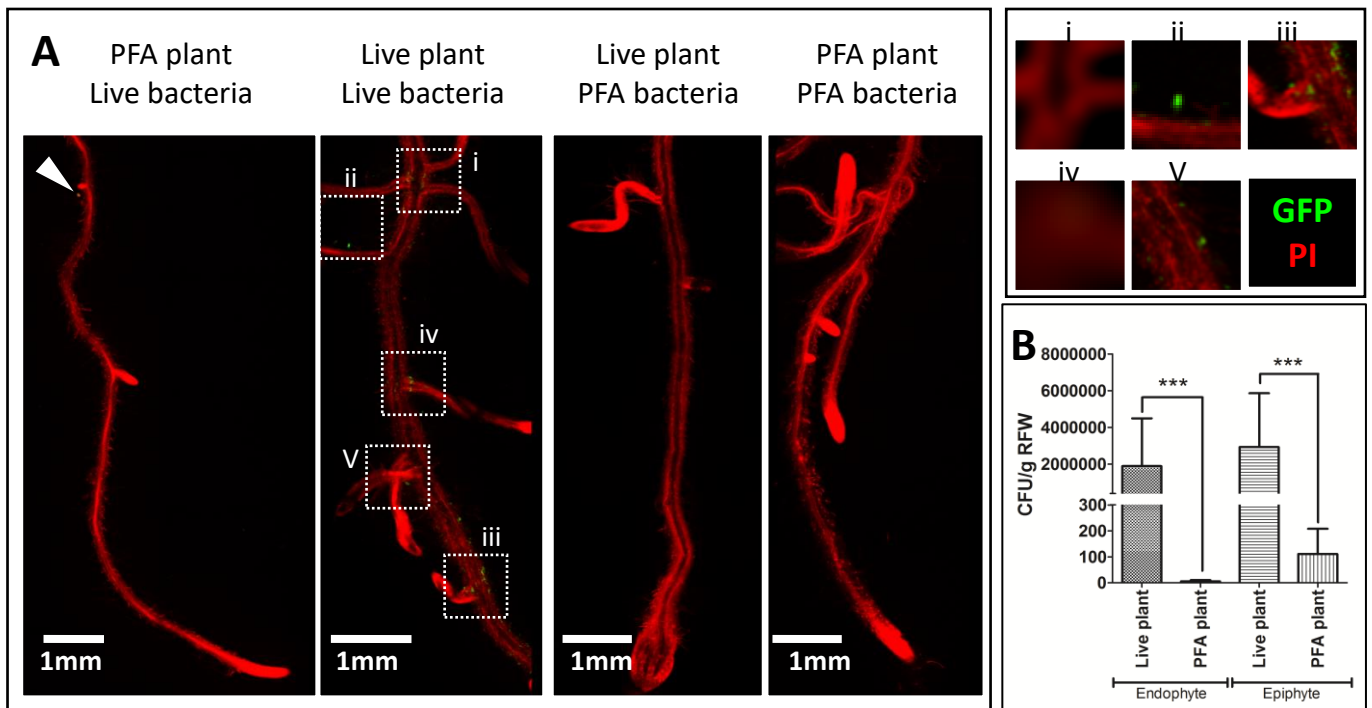
Supporting Information Figure S4: Representative images showing attachment of *Salmonella* on arabidopsis root hairs.



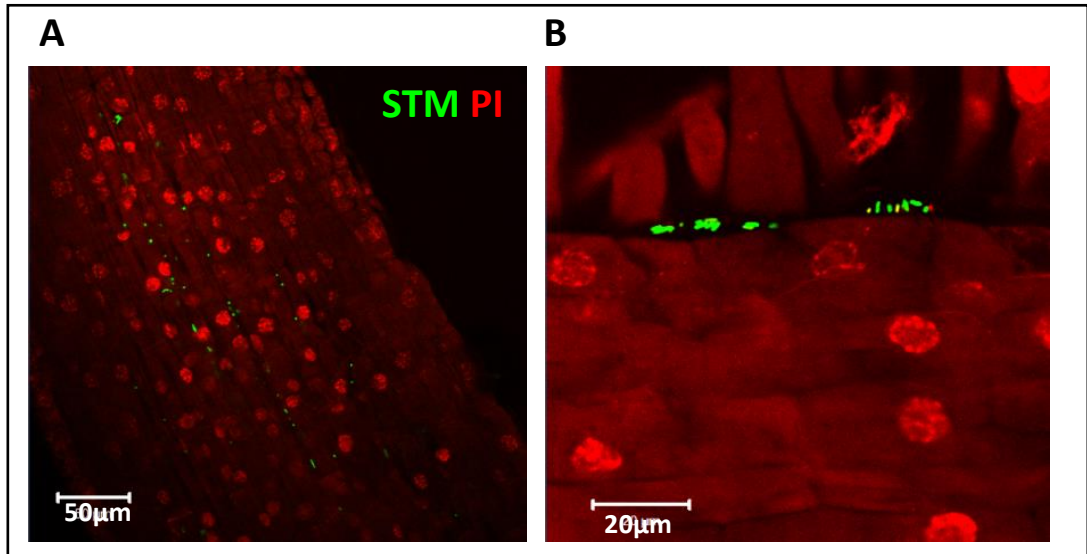
Supporting Information Figure S5: Invasion of *Salmonella* in the root hair cells of *Arabidopsis*
 Maximum intensity projection upon merging various optical sections showing colonization of *Salmonella* in the root hairs of *Arabidopsis*. The yellow cross represents the optical cross-sectional region shown on right in Z-X axis and Y-Z axis showing GFP positive *Salmonella* cells either on (extracellular) or inside (intracellular) the root hairs.



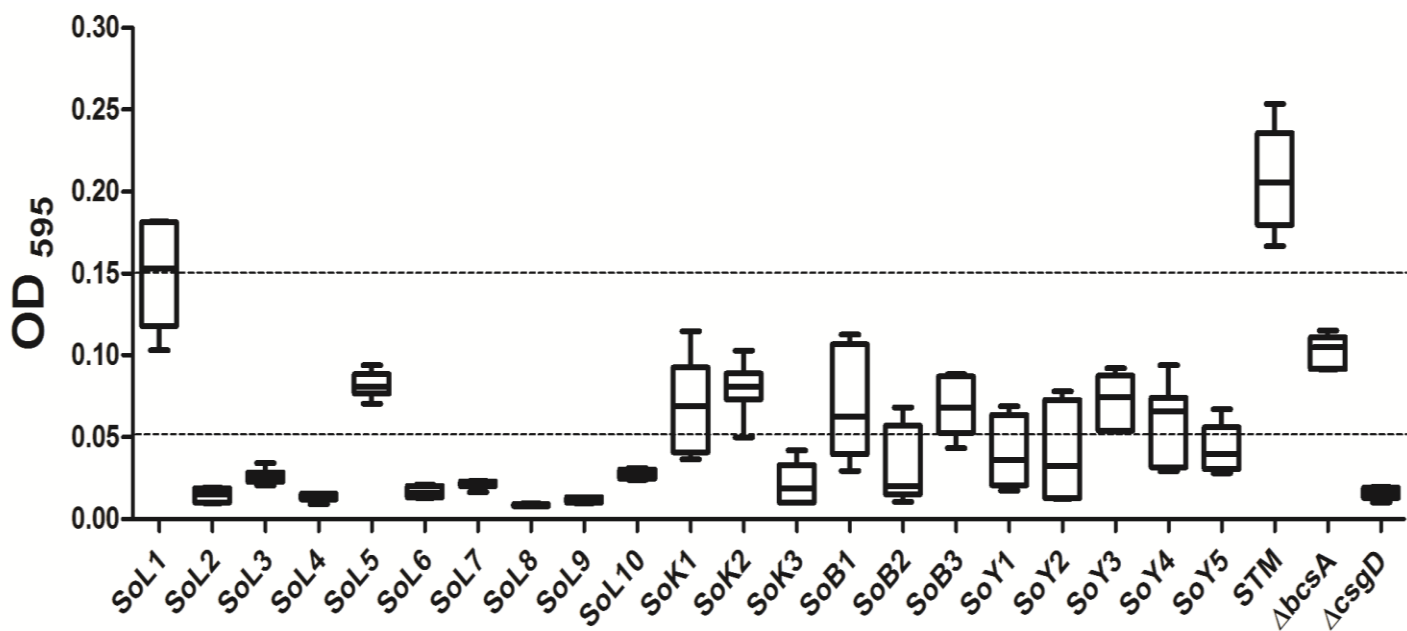
Supporting Information Figure S6: *Salmonella* inside the epidermal cell of Arabidopsis (A) and tomato (B). The yellow arrowhead is showing bacteria inside one epidermal cell of the plant. The cell membrane was stained using FM4-64.



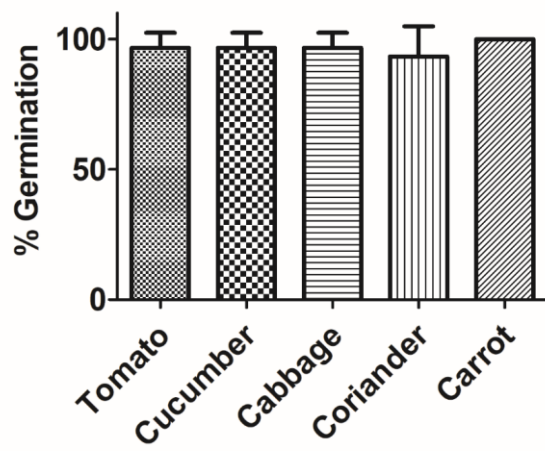
Supporting Information Figure S7: Vitality of interacting partner for colonization. (A) Representative confocal image of Live or PFA fixed plant showing *Salmonella* colonization. White arrowhead represents live *Salmonella* on the rhizoplane of PFA fixed plant. Insets represents the live *Salmonella* (expressing GFP) on rhizoplane of live *Arabidopsis* roots. Images were taken using tile scan of the entire *Arabidopsis* roots using LEICA SP8 and processed using LAS-X platform. (B) Enumeration of CFU from the rhizoplane and tissue of *Arabidopsis* roots. One way ANOVA followed by Bonferroni Post test was used to analyze the results. ***= $P < 0.001$.



Supporting Information Figure S8: Representative confocal image of PFA fixed plant root (PI stained nuclei) and attached *Salmonella* at (A) 40X magnification showing the intercellular localization of bacteria and (B) at 63X magnification showing the lateral side of roots with root hairs and bacteria attached on the surface.



Supporting Information Figure S9: Spectroscopy based quantification of biofilm by staining with crystal violet for the rhizospheric isolates.



Supporting Information Figure S10: Percent germination of different vegetable seeds upon pre-inoculation with *L.macrolides*.