

Supplement of Atmos. Chem. Phys., 20, 8593–8610, 2020
<https://doi.org/10.5194/acp-20-8593-2020-supplement>
© Author(s) 2020. This work is distributed under
the Creative Commons Attribution 4.0 License.



Supplement of

**Airborne in situ measurements of aerosol size distributions and
black carbon across the Indo-Gangetic Plain during
SWAAMI–RAWEX**

Mukunda Madhab Gogoi et al.

Correspondence to: Mukunda Madhab Gogoi (dr_mukunda@vssc.gov.in)

The copyright of individual parts of the supplement might differ from the CC BY 4.0 License.

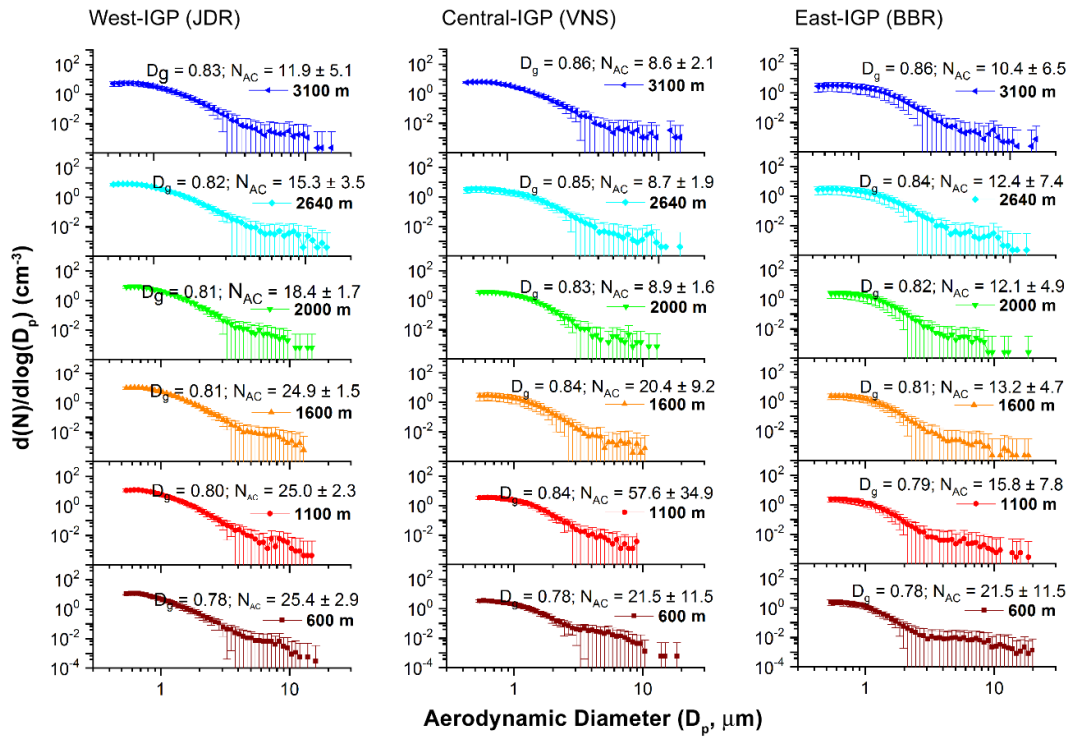


Figure S1. Aerosol number size distributions at different heights above the ground level (AGL), indicating the change in the pattern of distribution with altitude over the western, central and eastern parts of the IGP.

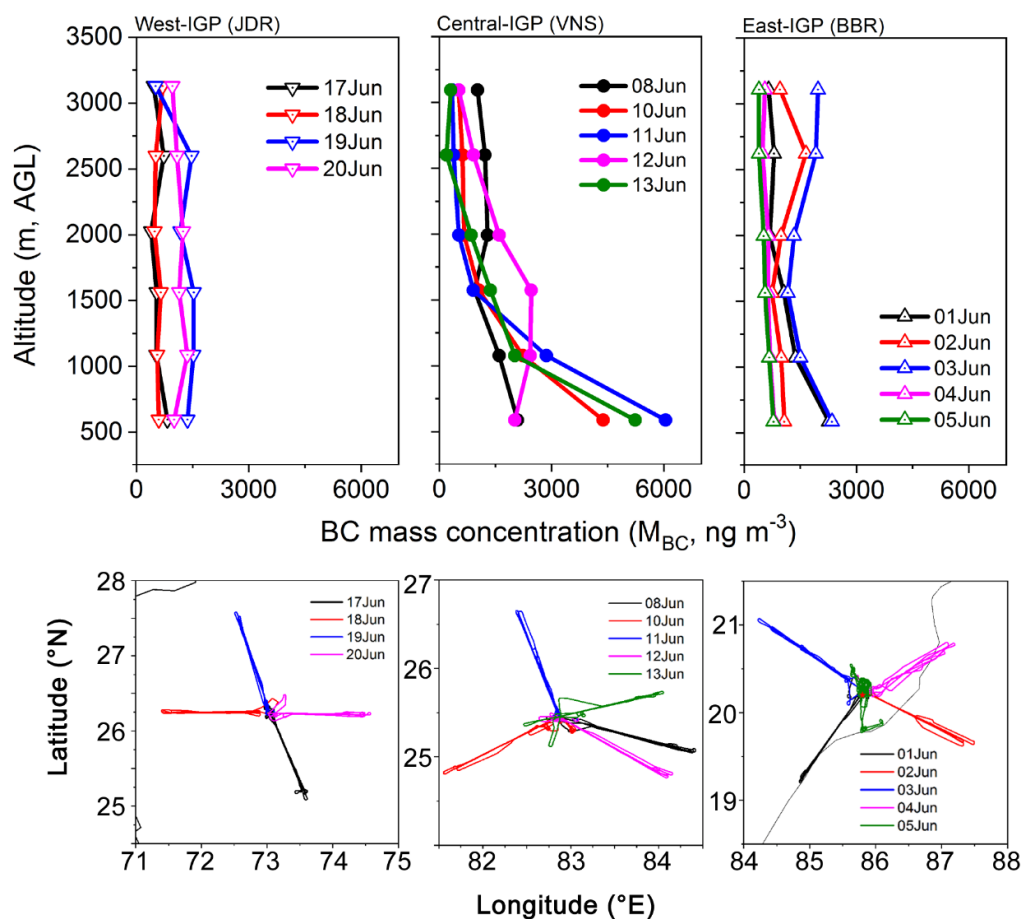


Figure S2. Daily profiles of Black Carbon mass concentrations (M_{BC}) at each of the observational sites. The direction of flight sorties (bottom panel) corresponding to each of the M_{BC} profiles (for different days) are shown in the bottom panel.